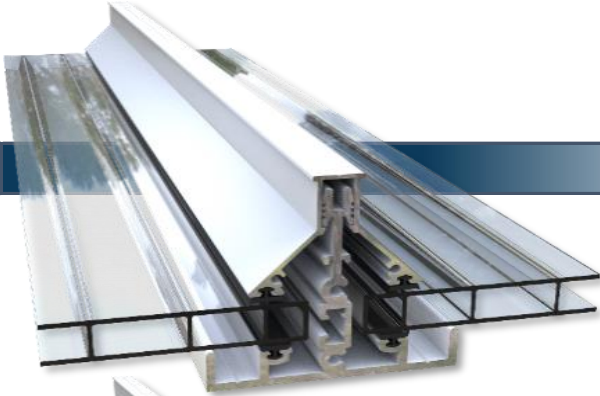


PATIO COVER COMPONENTS

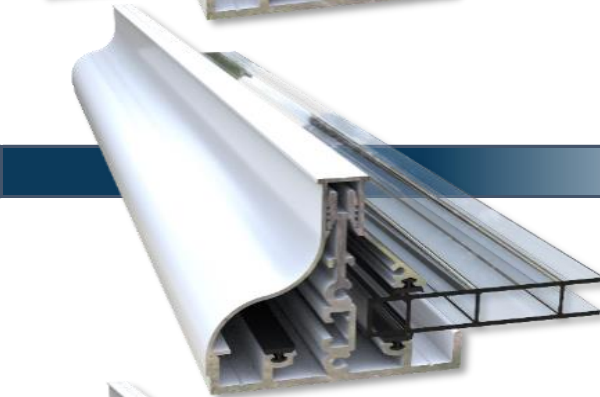
T-BAR Rafter Combinations



T-Bar Rafter Assembly (Acrylic)

120010

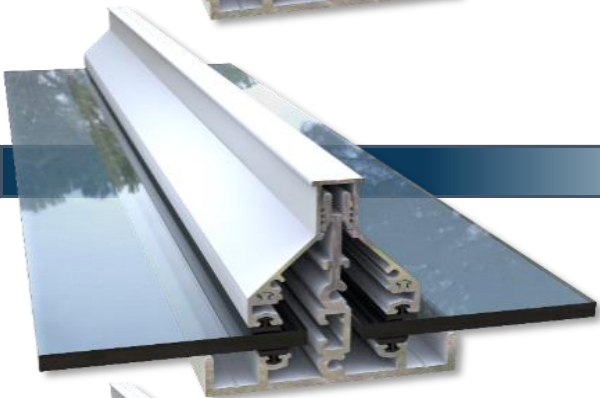
Intermediate Aluminum T-Bar Rafter Assembly For 16mm (5/8")
Glazing
Includes: T-Bar Rafter, T-Bar Cap, Rubber Gasketing & End Cap



T-Bar Rafter Fascia Assembly (Acrylic)

120020

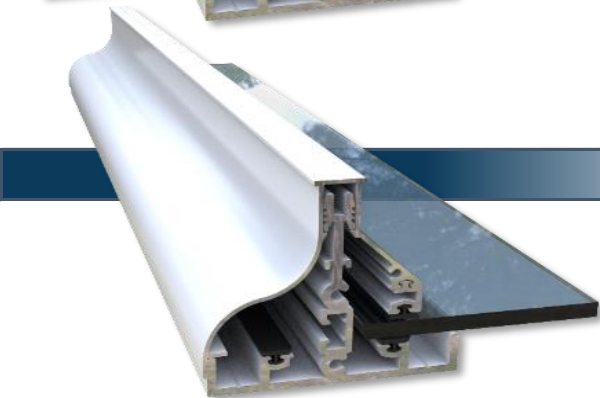
Outer Edge Aluminum T-Bar Rafter Assembly For 16mm (5/8")
Glazing
Includes: T-Bar Rafter, Fascia Cap, Rubber Gasketing & End Cap



T-Bar Rafter Assembly (Glass)

120030

Intermediate Aluminum T-Bar Rafter Assembly For 6mm (1/4")
Glazing
Includes: T-Bar Rafter, T-Bar Cap, Glass Spline Insert, Rubber
Gasketing & End Cap



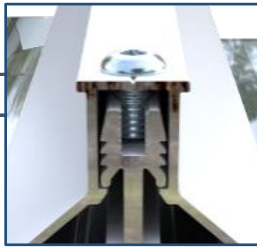
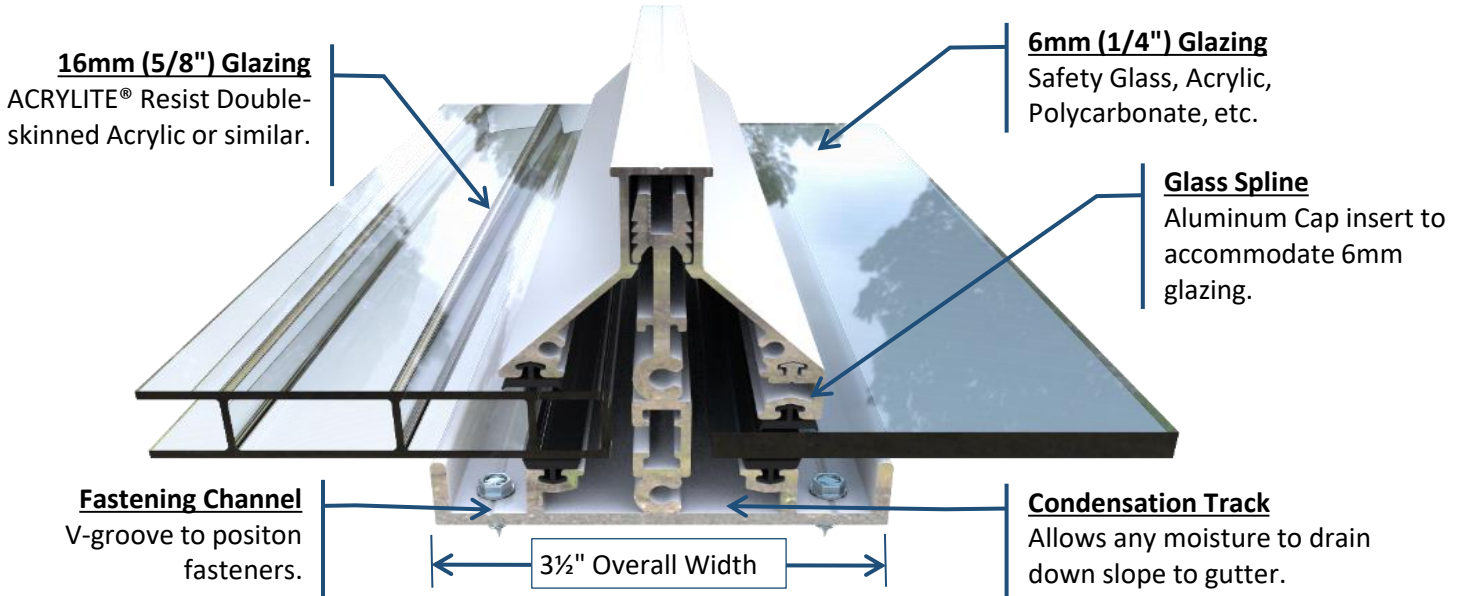
T-Bar Rafter Fascia Assembly (Glass)

120040

Outer Edge Aluminum T-Bar Rafter Assembly For 6mm (1/4") Glazing
Includes: T-Bar Rafter, Fascia Cap, Glass Spline Insert, Rubber
Gasketing & End Cap

PATIO COVER COMPONENTS

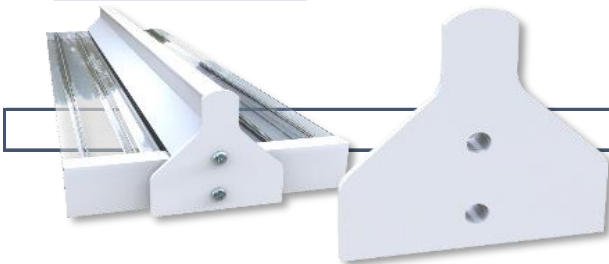
T-BAR Rafter Details / Options



Optional T-Bar Rafter Fastening

Pricing will vary per engineering

NOT recommended for standard residential covers. Fasteners used to attach Cap to T-Bar Rafter where engineering calls for increased spans and/or loading and for some commercial applications.



T-Bar End Cap

110050

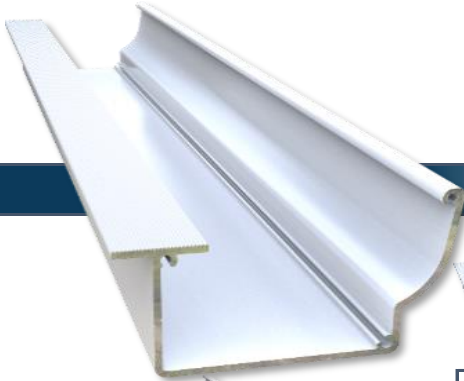
Included On Each Length Of T-Bar Rafter Combination As Shown Above.

Individual T-Bar Rafter Components

T-Bar	FT	110010
T-Bar Cap	FT	110020
T-Bar Facia Cap	FT	110030
T-Bar Glass Spline	FT	110040
Rubber Gasket	FT	710020

PATIO COVER COMPONENTS

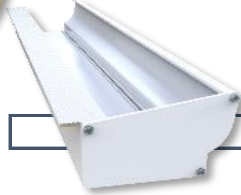
GUTTERS & Accessories



Low Profile Gutter

110200

Low Outer Face In Line With 16mm Glazing To Prevent Potential Accumulation Of Snow On Cover.



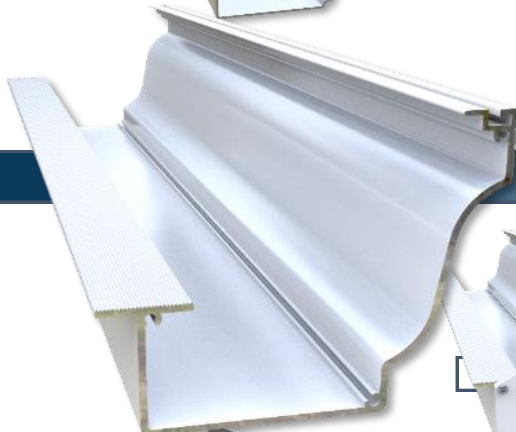
Low Profile Gutter End Cap

110220

Low Profile Gutter Splice -16"

110211

Insertable Aluminum Splice To Connect Two Sections Of Gutter Where Lengths Over 24 Foot Are Required.



Colonial Gutter

110230

Heavy Duty Extruded Gutter Designed To Visually Mirror Appearance Of Conventional Gutters.



Colonial Gutter End Cap

110250

Colonial Gutter Splice -16"

110241

Insertable Aluminum Splice To Connect Two Sections Of Gutter Where Lengths Over 24 Foot Lengths Are Required.



2 x 3 Gutter Downpipe Outlet

110260

Standard Gutter Outlet Affixed To Underside Of Gutter Allowing Attachment Of Downpipe Or Elbows.

PATIO COVER COMPONENTS



2 x 3 Gutter Downpipe Elbow

110270

Conventional Formed Aluminum 135° Gutter Downpipe Elbows.



2 x 3 Gutter Downpipe -10'

110280

Conventional Formed Aluminum Gutter Downpipe.

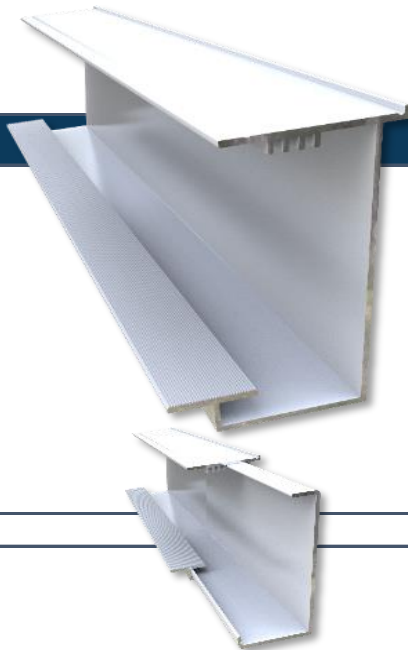


2 x 3 Gutter Downpipe Strap

110290

Standard Aluminum Straps To Wrap Around Downpipe Attaching To Post Or Adjacent Structure.

HANGER



Hanging Rail

110110

Extruded Aluminum Channel Attached Along Structure Or Fascia Or Above Roofline As High Starting Point For Shed Style Covers.



Hanging Rail End Cap (Left) Hanging Rail End Cap (Right)

110140

One Of Each Required To Close Ends Of Hanging Rail.

Hanging Rail Splice -16"

110121

Insertable Aluminum Splice To Connect Two Sections Of Hanging Rail Where Over 24 Foot Lengths Are Required.

PATIO COVER COMPONENTS

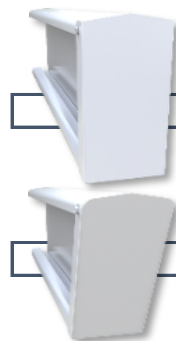
BEAMS & Accessories



Heavy Duty Beam

110300

Heavy Duty Beam Used As The Standard In Both Shed & Gable Covers. Pitched Top To Accommodate Various Roof Pitches. Channeled Lower Section To Hide Fasteners When Used As The Gable Ridge.



Heavy Duty Beam 90° End Cap Pkg

120310

Finish Ends Of The Heavy Duty Beam When Cut Squarely.

Heavy Duty Beam 22½° End Cap Pkg

120320

Finish Ends Of The Heavy Duty Beam When Miter Cut.

Heavy Duty Beam Splice Package

120330

Insertable Aluminum Splice To Connect Two Sections Of Heavy Duty Beam Where Lengths Over 24 Foot Are Required.



Twin Wall Beam

110350

Similar In Design To The Heavy Duty Beam. Can Be Substituted In Both Shed & Gable Covers And As The Gable Ridge. Twin Wall Design Allows For Greater Spans Between Supports.



Twin Wall Beam 90° End Cap

120360

Finish Ends Of The Twin Wall Beam When Cut Squarely.

Twin Wall Beam 22½° End Cap

120370

Finish Ends Of The Twin Wall Beam When Miter Cut.

Twin Wall Beam Splice Package

120380

Insertable Aluminum Splice To Connect Two Sections Of Twin Wall Beam Whi

PATIO COVER COMPONENTS



Box Beam

110390

Unique Clean Box Design As An Alternative To the Heavy Duty Beam. Ideal For Header For Sunroom Roofs Or Where Architectural Design Or Personal Preference Dictates.



Heavy Duty Beam 90° End Cap Pkg

120310

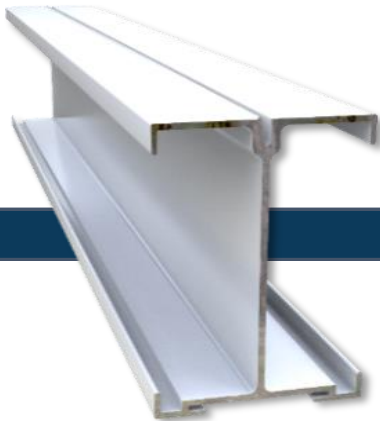
Finish Ends Of The Heavy Duty Beam When Cut Squarely.



Heavy Duty Beam 22½° End Cap Pkg

120320

Finish Ends Of The Heavy Duty Beam When Miter Cut.



Light Duty Beam

110420

Lighter Beam For Smaller Covers And Spans. Also Used As Horizontal Base For Framing Gable Ends.



Light Duty Beam Splice Package

120430

Insertable Aluminum Splice To Connect Two Sections Light Duty Beam Where Lengths Over 24 Foot Are Required.



Ridge Beam Cover

110340

PATIO COVER COMPONENTS



Wall Mount Bracket - 5 $\frac{3}{4}$ "

110653

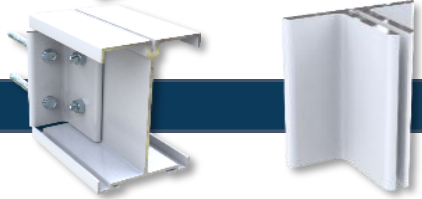
Heavy Extruded Bracket Used To Mount Beams Directly To Existing Structures And Attach Various Mounting Brackets To Structure Roofs.



Wall Mount Bracket - 4 $\frac{3}{4}$ "

110652

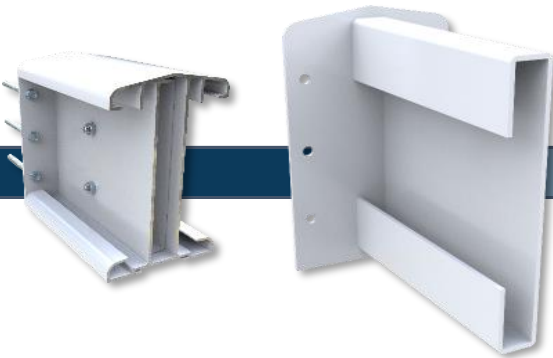
Heavy Extruded Bracket Used To Mount Beams Directly To Existing Structures.



Wall Mount Bracket - 3 $\frac{1}{2}$ "

110651

Heavy Extruded Bracket Used With the Light Duty Beam And To Connect Beams To Each Other.



Twin Wall Mounting Bracket

110660

Heavy Aluminum Bracket Used To Mount Twin Wall Beams Directly To Existing Structures.



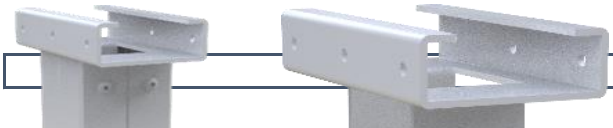
Box Beam Mounting Bracket

110670

Heavy Aluminum Bracket Used To Mount Box Beams Directly To Existing Structures.

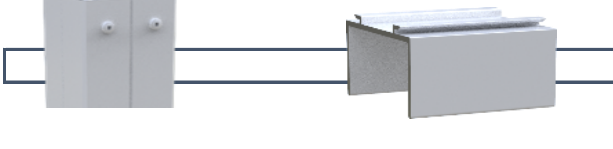
PATIO COVER COMPONENTS

POSTS & Accessories



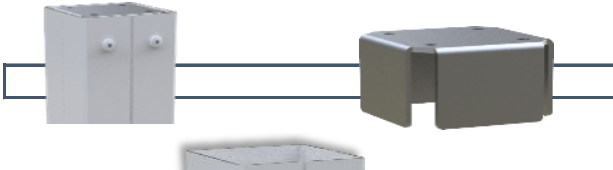
Universal Beam Post Bracket 110570

Designed To Accommodate Heavy Duty Beams For Increased Strength And Stability.



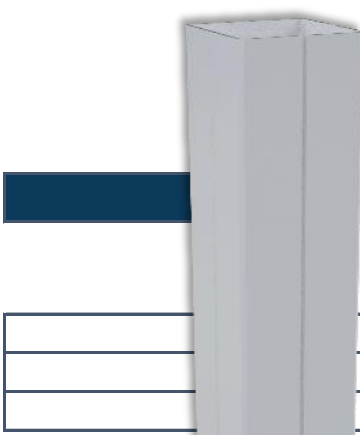
Post Top Shoe (Extruded) - 3" 110521

Unique Top Shoe Inserts Into Channel On Underside Of Beams And Slides Along Length Of Beam To Desired Position.



Internal Top/Bottom Post Shoe 110530

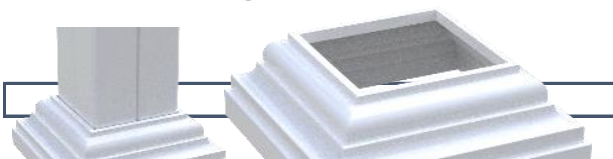
Bracket Attaches To Beam Or Post Mounting Surface And Inserts Fully Into Patio Cover Post to Become Completely Concealed.



Patio Cover Post 110500

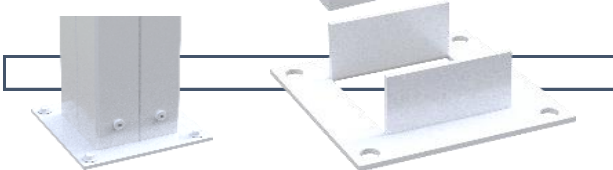
Square Extruded Post, Beveled On Each Of The Four Corners. Standard With All Covers.

Patio Cover Post - 102"	110501
Patio Cover Post - 120"	110502
Patio Cover Post - 144"	110503



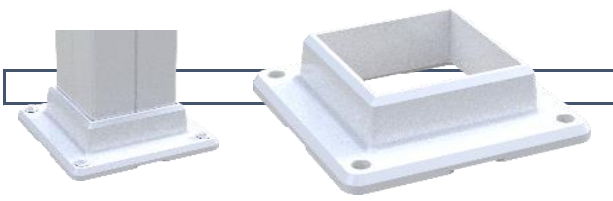
Post Base Shoe Cover 110550

Decorative Cover For Post Base Shoe to Conceal Fasteners.



Post Base Shoe 110540

Post Base For Mounting Directly To Deck Or Slab. Upper Legs Insert Into Patio Cover Beveled Post.



3" Post Base (Cast) 110560

Alternative Patio Cover Post Base.

PATIO COVER COMPONENTS

ROOF MOUNTS & RISERS



Roof Riser Package - Hanger

120700

Allows Hanging Rail To Be Elevated Above Existing Roofs To Achieve Desired Height And/Or Necessary Cover Pitch.

INCLUDES: Roof Mount Base, Post Base Bracket, 3" Bevelled Post (12"), Hanger Post Bracket, All Necessary Standard Fasteners



Roof Riser Package - Beam

120710

FOR BEAM PROJECTING FROM ROOF/STRUCTURE

Allows Heavy Duty Beam To Be Elevated Above Existing Roofs To Achieve Desired Height And/Or Necessary Cover Pitch.

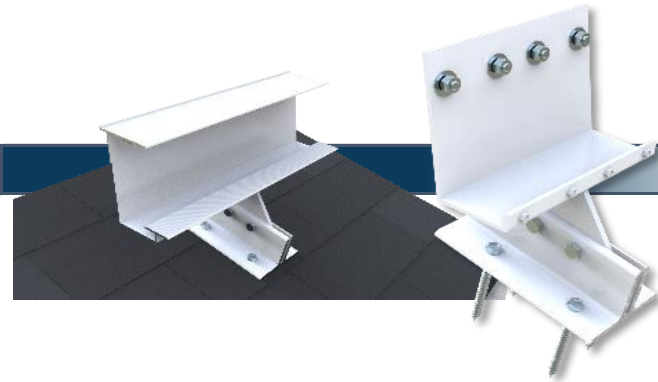
INCLUDES: Roof Mount Base, Post Base Bracket, 3" Bevelled Post (12"), Heavy Duty I-Beam Post Bracket, All Necessary Standard Fasteners



FOR BEAM RUNNING WITH OR ALONG ROOF/STRUCTURE

AS ABOVE. The Heavy Duty I-Beam Post Bracket Is Inserted Into The Post Rotated 90° To Allow For Desired Beam Direction.

PATIO COVER COMPONENTS



Roof Mount Package - Hanger

120730

Allows Hanging Rail To Be Mounted To Existing Roofs To Achieve Desired Height And/Or Necessary Cover Pitch.

INCLUDES: Roof Mount Base, Hanger Mounting Bracket, All Necessary Standard Fasteners

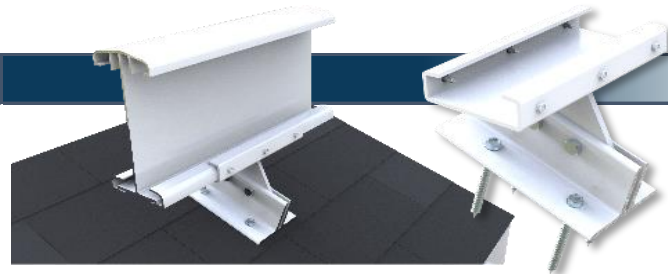


Roof Mount Package - Beam (Forward)

120740

Allows Heavy Duty Beam To Be Mounted To Existing Roofs To Achieve Desired Height And/Or Necessary Cover Pitch. Used For Beams Protruding From Existing Roof.

INCLUDES: Roof Mount Base, I-Beam Mounting Bracket, All Necessary Standard Fasteners



Roof Mount Package - Beam (Across)

120750

Allows Heavy Duty Beam To Be Mounted To Existing Roofs To Achieve Desired Height And/Or Necessary Cover Pitch. Used For Beams Running Across Existing Roof.

INCLUDES: Roof Mount Base, I-Beam Mounting Bracket, All Necessary Standard Fasteners

PATIO COVER COMPONENTS

SkyLift Attachments

SkyLift Roof Risers

SkyLift Riser Tube Assembly - 18"	110771
SkyLift Riser Tube Assembly - 24"	110772
SkyLift Riser Tube Assembly - 36"	110773

Mount Directly On Existing Structure Exterior Load Bearing Wall.
Rises Through Existing Roof To Varying Height.
Top With Selection Of Riser Cap To Attach Desired Patio Cover component.
Use Standard Roof Collar To Finish.

SkyLift Saddle Beam

120790

Attach To Roof Riser To Mount Heavy Duty Beam.
Rotate To Allow Beam To Run Along Roof Or To Project From Roof.

SkyLift Saddle Hanging Rail

120780

Attach To Roof Riser To Mount Standard Hanging Rail.

PATIO COVER COMPONENTS

FLASHINGS



Ridge Flashing - 3 $\frac{3}{4}$ " x 3 $\frac{3}{4}$ " x 102"

110810

Formed Aluminum Flashing Used In Gable Ridge Beams And In Shed Covers Where Beam Is Used In Place Of Hanging Rail.



Hanger Flashing - 1 $\frac{7}{8}$ " x 2 $\frac{1}{8}$ " x 102"

110800

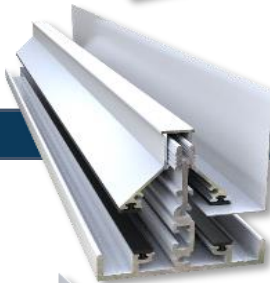
Formed Aluminum Flashing Used In Hanging Rail For Classic Covers.



Wall Flashing - 2 $\frac{3}{4}$ " x 1 $\frac{1}{4}$ " x 102"

110820

Formed Aluminum Flashing Used When Side Of Covers Meet With Structure Walls.



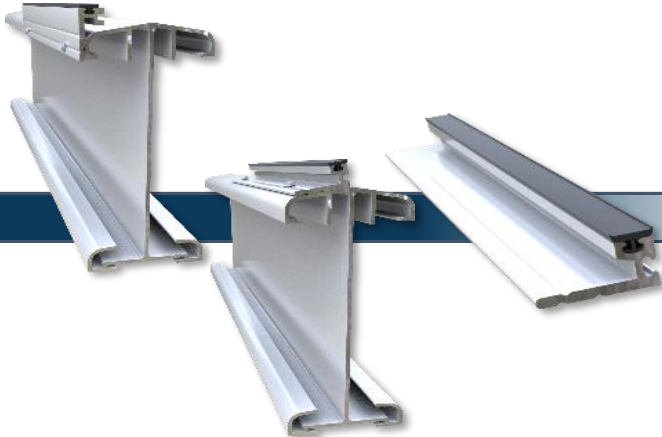
Gutter Flashing - 3 $\frac{1}{2}$ " x $\frac{3}{4}$ " x $\frac{7}{8}$ " x 102"

110830

Formed Aluminum Flashing Used When Mounting Covers Above Existing Conventional Gutters.

PATIO COVER COMPONENTS

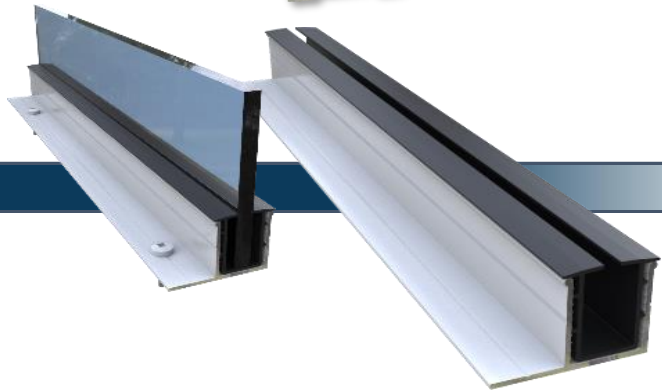
WEATHER BLOCKS & WIND BREAK GLAZING



Weather Block with Gasket

120100

Gasketed Aluminum Section Used On Top Of Or On The Face Of Beams Between T-Bar Rafters. Seals The Opening Between The Glazing The Beam To Block Weather And/Or Insects.



Glass Rail with Vinyl Insert

120930

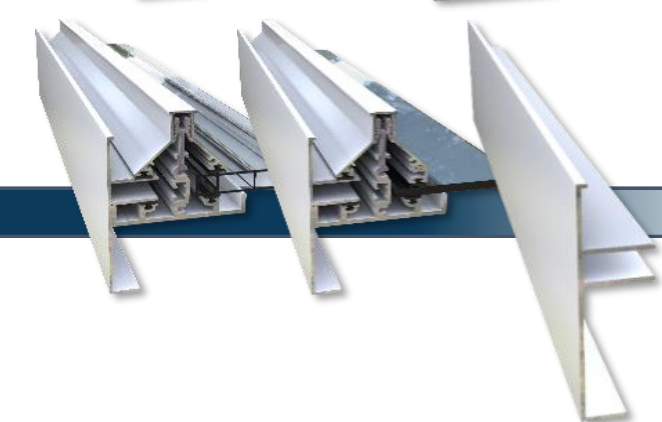
Aluminum Section With Insert Attaches To Post & Beams For Vertical Glass Glazing In Wind Walls, Etc.



Large F-Section

110920

Larger Aluminum F-Section Used To Hold Acrylic Panels In Place When Used To Glaze Small Vertical Areas Such As Gable Ends (Rakes).



Side Fascia

110950

Standard Aluminum Side Fascia Finish Outer Edges Of Cover As Alternative To Fascia Cap Used With T-Bar Combination (Acrylic) Or T-Bar Combination (Glass) As Shown Above.

PATIO COVER COMPONENTS

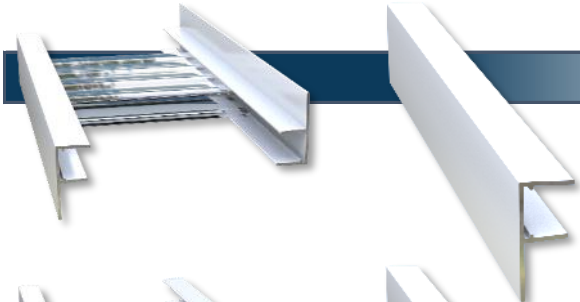
GLAZING & Accessories

ACRYLITE® Resist High Impact Acrylic Sheet

16mm Double-Skin

	ACRYLITE® - Clear	210100
	ACRYLITE® - Bronze	210200
	ACRYLITE® - Solar Cool White	210300
	ACRYLITE® - HEATSTOP Cool Blue	210400
	ACRYLITE® - Light White	210500
	ACRYLITE® - Enviro White	210600
	ACRYLITE® - ALLTOP Clear	210700

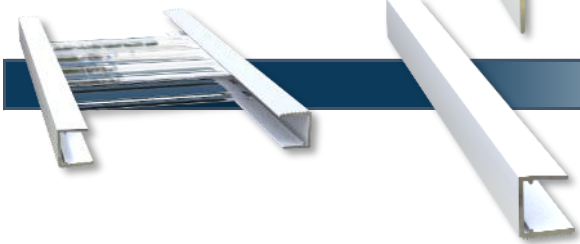
F-Section



110910

Aluminum F-Section Used To Seal Open Ends Of 16mm Double-Skin Acrylic Panels. Leg Directs Water Downward Into Gutter On Lower End Of Acrylic Panels And Oriented Upward To Stop Water Driving Up Into Hanger.

Terminal Section

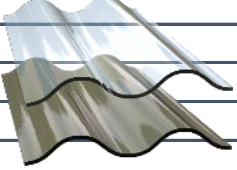


110900

Aluminum Section Used To Seal Open Ends Of 16mm Double-Skin Acrylic Panels. Used In Extreme Pitches Or Where Alternative To F-Section Is Merited. Serrated Side To Restrict Water Flow Upwards On High End And Downward On Low End.

PATIO COVER COMPONENTS

ACRYLITE® 3mm Wave Profile

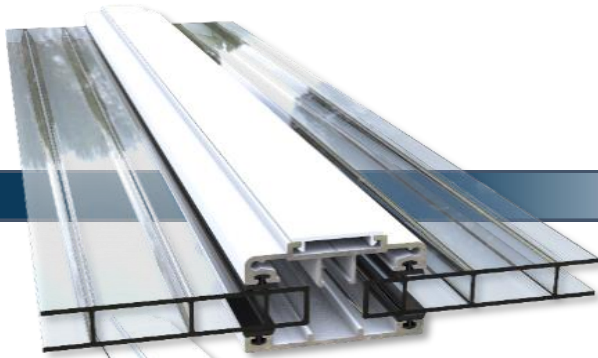


ACRYLITE® Wave - Smooth Clear -12	310101
ACRYLITE® Wave - Smooth Clear -16	310102
ACRYLITE® Wave - Smooth White -12	310201
ACRYLITE® Wave - Smooth White -16	310202
ACRYLITE® Wave - Smooth Sunglass Grey -12	310301
ACRYLITE® Wave - Smooth Sunglass Grey -16	310302
ACRYLITE® Wave - Graphite Grey -12	310401
ACRYLITE® Wave - Graphite Grey -16	310402
ACRYLITE® Wave - Textured Clear -12	310501
ACRYLITE® Wave - Textured Clear -16	310502
ACRYLITE® Wave - Textured Bronze -12	310601
ACRYLITE® Wave - Textured Bronze -16	310602
ACRYLITE® Wave - Prismatic Clear -12	310701
ACRYLITE® Wave - Prismatic Clear -16	310702
ACRYLITE® Wave - Prismatic Bronze -12	310801
ACRYLITE® Wave - Prismatic Bronze -16	310802
ACRYLITE® Wave - HEATSTOP Cool Blue -12	310901
ACRYLITE® Wave - HEATSTOP Cool Blue -16	310902
Wave Profile Calottes (Mill)	311000
Wave Profile Calottes (Brown)	312000
Wave Profile Foam Closure	313000
Wave Ridge Flashing (2 piece)	314000
Wave Wall Flashing	315000

NOTE: All Wave Profile Products Are NOT Eligible For Any Further Discounts From Published Price.

PATIO COVER COMPONENTS

CLAMPING BAR



Clamping System Complete Assembly

121100

Glazing System Used To Attach Various Thicknesses Of Glazing Material To Existing Roof Structure, Pergola Or Similar.
INCLUDES: Clamping Bar, Base Metal, PVC Screw Cover, Gaskets.

Clamping Bar Upper Assembly

121000

Glazing System Used To Various Thicknesses Of Glazing Material To Existing Metal Rafters.
INCLUDES: Clamping Bar, PVC Screw Cover, Gaskets.

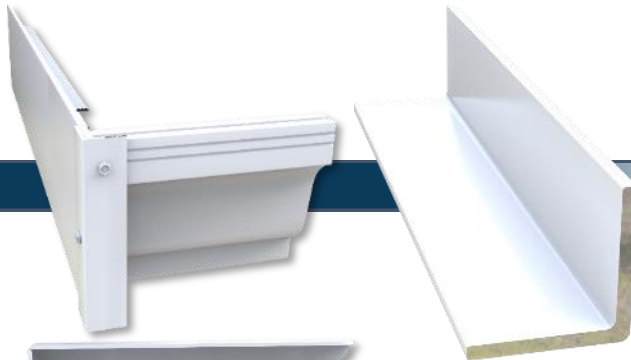
Clamping Bar Base Metal

111100

Clamping Bar End Cap

111300

EXTRAS



1 x 1 Corner

110940

Extruded Aluminum Corner Channel Used As Trim Where Necessary.

Beam Corner Gusset

110960

Used As A Decorative Element Or To Assist As A Brace Against Lateral Movement In Free-Standing Covers Or Otherwise.

PATIO COVER COMPONENTS

STOCK ACRYLIC & ALUMINUM SIZES

Acrylic Panels & Aluminum Profiles Stocked In 8, 10, 12, 14, 16, 20 & 24 Foot Lengths
Intermediate Sizes Will Be Billed At The Next Highest Stock Increment

Acrylic Panels Stocked In 4 Foot Widths
Intermediate Sizes Will Be Billed At 4 Foot Stock Or 2 Foot Half Acrylic Panel Widths.

Patio Cover Sizes Priced From Stock Material Sizes

Classic Projections: 8, 10, 12, 14, 16, 20 & 24 Foot Stock Lengths
Widths: 4 Foot Stock or 2 Foot Half Acrylic Panel Increments.

Cathedral Widths: 8, 10, 12, 14, 16, 20 & 24 Foot Stock Widths Or Doubled
Projections: 4 Foot Stock Or 2 Foot Half Acrylic Panel Increments.

Wave Profile Acrylic Stocked And Sold As 41 Inch Wide x 8, 12 Or 16 Foot Long Panels.
Intermediate Sizes On All Items Will Be Billed At The Next Highest Stock Increment

NON-STANDARD ACRYLIC PANEL WIDTHS

Acrylic Panels Cut Down To Equal Widths Across A Non-Stock Cover Width
Cover Will Be Priced At Next Highest Stock Size, Plus,

i.e.: 15 Foot Non-Stock Cover Cut To Have Four Equal Panel Widths

IRREGULAR OR NON-RECTANGULAR SHAPES

Differing Acrylic Panel Lengths Or Widths Within The Same Cover

CUSTOM (NON-STANDARD) METAL COLORS

Custom Painting For Metal Framework

ORDER CHANGES

Changes To Any Order After it Has Been Approved And Sent To Production

Color Changes (Acrylic or Metal) On Any Order After It Has Been Approved And Sent To Production

SHIPPING & PACKAGING

Shipping Costs Are Provided As Quoted By The Carrier And Therefore Non-negotiable.

Multiple Covers Shipped At The Same Time May Be Eligible For A Reduced Shipping Cost or Waiving Of Additional Shipping Fees

Packaging Is A Fixed Cost Applied To All Orders Regardless Of Size

Multiple Covers Packaged At The Same Time May Be Eligible For A Single Packaging Charge When Packaged Together