



AMERICAN
PATIO CONCEPTS
★ ★ ★



ACRYLIC PATIO COVER KIT INSTALLATION

Acrylic Patio Cover kits are easy to install! Our installation guide and video are easy-to-follow, but help from our support team is always just a phone call away. Read the guide, gather up your tools, layout your components and roll up your sleeves! In as little as one day, you will have installed a top quality Acrylic Patio Cover that withstand the test of time.

All Acrylic Patio Cover Kits come complete with the following –

- Aluminum posts, I-beams, rafters and accessories
- Aluminum hanging rail and flashing
- Aluminum gutters with downpipe and accessories
- Aluminum side fascia
- Acrylic (double-skin sheets)
- Standard fasteners Note: For some installations, additional special hardware or fasteners may be required.

Required Tools and Hardware

In addition to the components and materials included with your Acrylic Patio Cover kit, you will require the following tools and hardware:

- tape measure
- square
- level
- felt tip marker or grease pencil
- no. 2 Robertson screwdriver (red handle) and/or Phillips screwdriver
- electric drill with 3/16" diameter drill bit
- rubber mallet
- utility knife
- pliers
- plumb line
- chalk line
- step or extension ladders (suitable to reach beyond your highest intended installation height)
- soft, non-abrasive cleaning rags

The following items may be required (dependent upon the on-site alterations you may be making to the supplied kit):

- circular saw with blades suitable for cutting aluminum and plastic products
- hacksaw and/or miter saw
- tin snips
- silicone sealant (recommend Tremco Spectrum II, G.E. Silpruf or Dow 795)
- metal roof flashing (no less than 0.029 gauge)
- safety goggles

CONTACT US

5916 195th St., NE
Arlington, WA 98223
www.americanpatiocovers.com
Email: tom@americanpatiocovers.com
Phone: 360-530-2508

copyright © 2020 American Patio Cover
Rev 23
May 2020



ACRYLITE® Patio Systems

Protect your deck or favorite outdoor environment, cover a spa or pool while still enjoying natural light. Block the harmful UV rays without blocking the light from nearby doors and windows. Don't let rain spoil that outdoor gathering and create some extra living space for your home.

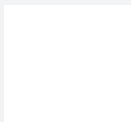
Produced from the most weatherable polymer on the market, ACRYLITE® acrylic sheet outperforms other covering products like fiberglass, polycarbonate and PVC product.

Fully engineered, structural aluminum framework is easily adaptable to suit virtually any application and each cover is manufactured to each unique project. Combine from several Acrylite & Metal color to complete a lasting cover uniquely designed to suit your personal style and taste.

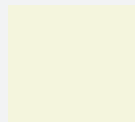
Talk to us about today how we can help make your dream became a reality.

Acrylic Color Choice: Heatstop Cool blue, Solar Cool white, Light white, Clear, Bronze

Aluminum
Framework
Color Choices:



WHITE



BEIGE



BROWN



BLACK



Rev. 23
20200521



***Reduce Heat Buildup**

Solar tints and Heatstop option Create a comfortable environment.

***Attractive High-Gloss Sheen**

Light diffusing surface emits soft uniform light even on overcast days.

***Affordable & Safe**

Shield your family from harmful UV rays. Less expensive than glass and made from engineered, resilient high-impact acrylic.

***Custom Designs**

Adapts to single or multi-story homes as well as structural and non-structural systems.

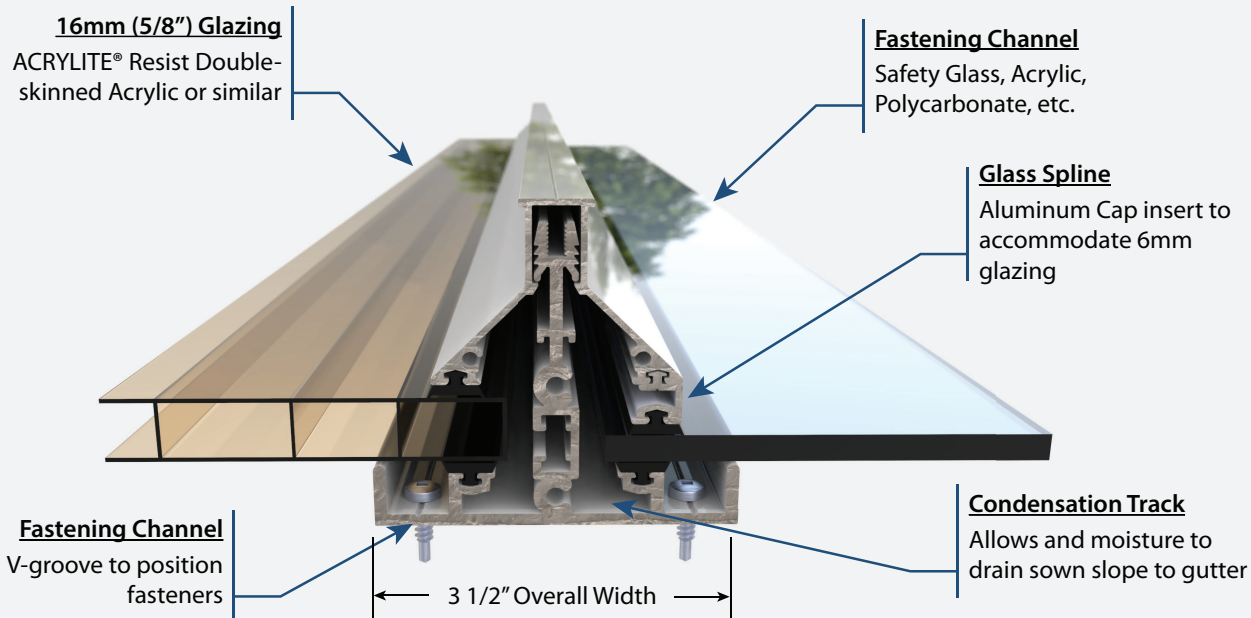
***Long Lasting & Maintenance Free**

No replacement costs due to yellowing. Backed by a 10 year hail and 30 year non-yellowing warranties.

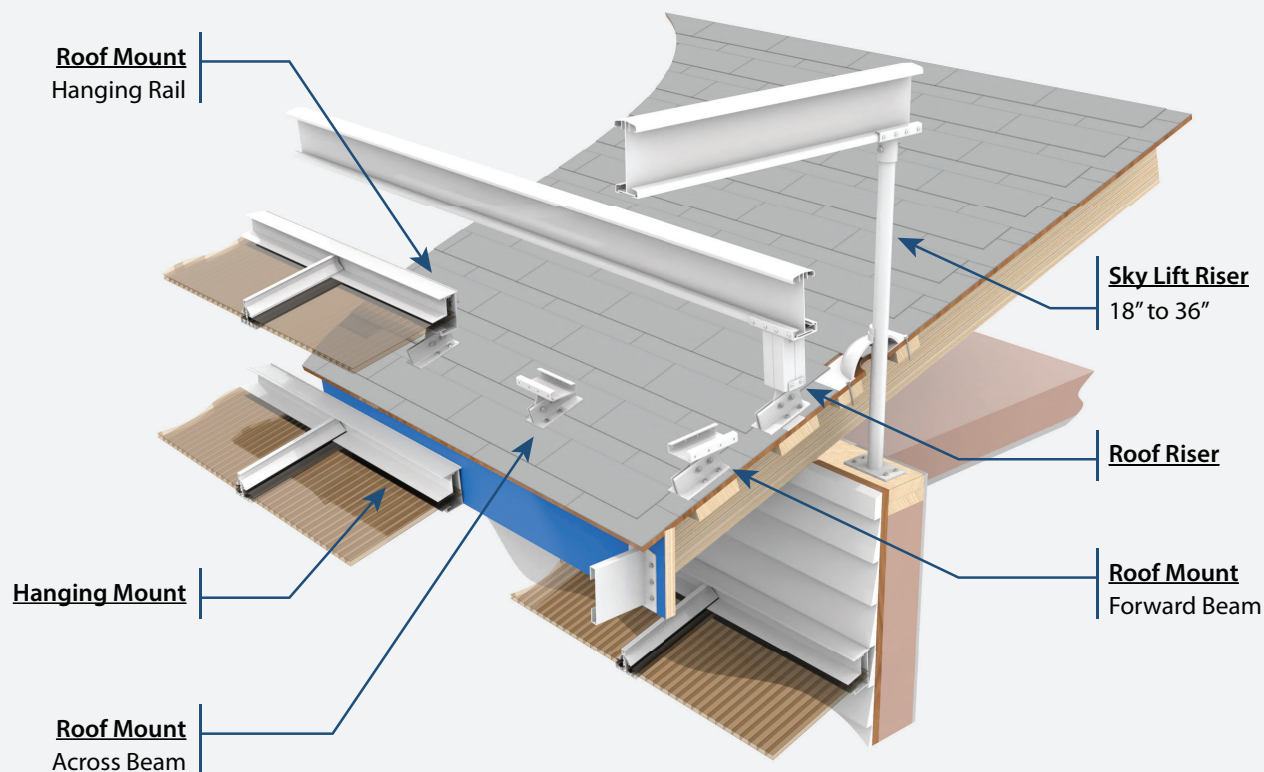




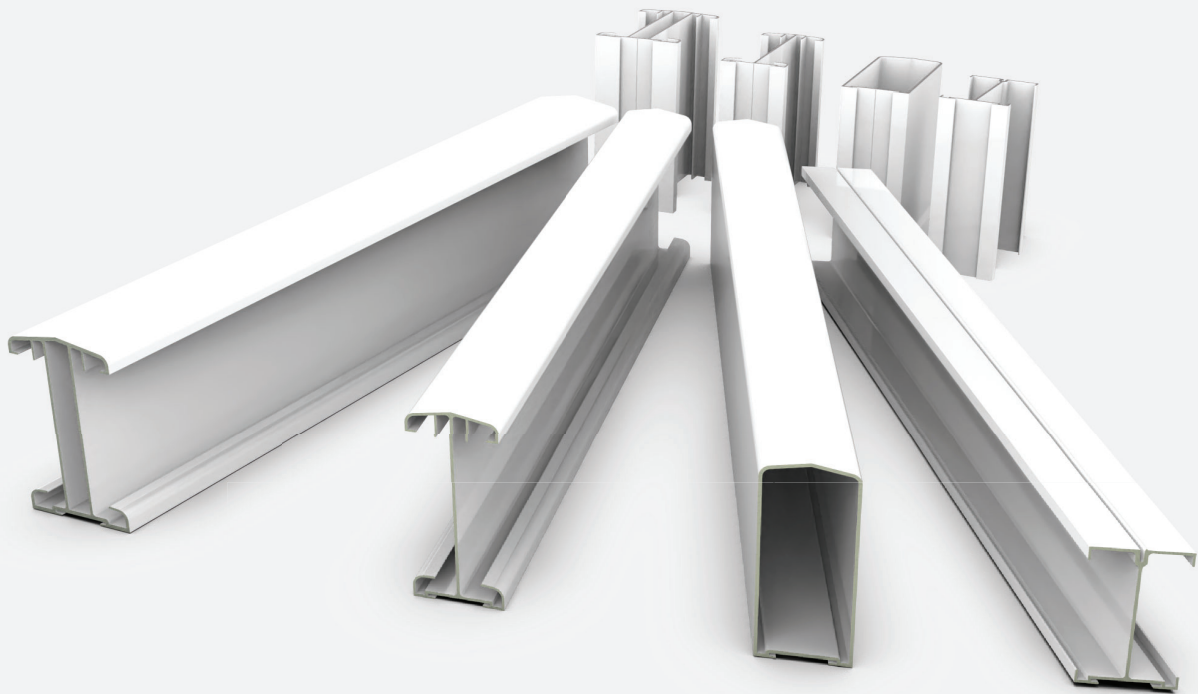
T-Bar Rafter Details / Options



Roof Mount Details / Options



Beam Options



Post Options



Refine the Outdoors



TABLE OF CONTENTS

ACRYLITE PANELS	----- 12
101718	ACRYLITE® 14
101740	TERMINAL SECTION 15
102237	F-SECTION 16
RAFTER SYSTEMS	----- 18

100433	T-BAR RAFTER ASSEMBLY (ACRYLIC)	20
100801	T-BAR RAFTER FASCIA ASSEMBLY (ACRYLIC)	21
100802	T-BAR RAFTER ASSEMBLY (GLASS)	22
100803	T-BAR RAFTER FASCIA ASSEMBLY (GLASS)	23

BEAM SUPPORTS -----24

100340	LIGHT DUTY BEAM	26
100365	HEAVY DUTY BEAM	27
100394	TWIN WALL BEAM	28
100427	BOX BEAM	29
100855	HEAVY DUTY BEAM 22.5 DEGREE END CAP	32
100895	TWIN WALL BEAM 90 DEGREE END CAP	33
100919	TWIN WALL BEAM 22.5 DEGREE END CAP	34
100405	HEAVY DUTY BEAM SPLICE - 16"	35
100573	TWIN WALL MOUNTING BRACKET	38
100577	RIDGE FLASHING - 3 3/4" X 3 1/4" X 102"	39

POST COMPONENTS -----40

100425	PATIO COVER POST	42
100429	POST TOP SHOE (EXTRUDED) - 3"	43
100523	INTERNAL TOP/BOTTOM POST SHOE	44
103495	UNIVERSAL BEAM POST BRACKET	45
100533	POST BASE SHOE	46
100282	3" POST BASE (CAST)	47
100280	POST BASE SHOE COVER	48

GUTTER SYSTEMS -----50

100385	LOW PROFILE GUTTER WITH END CAPS	52
101142	COLONIAL GUTTER WITH END CAPS	53
102057	2 x 3 GUTTER DOWNPIPE -10'	54
102060	2 x 3 GUTTER DOWNPIPE ELBOW	55

102061	2 x 3 GUTTER DOWNPIPE OUTLET	56
102062	2 x 3 GUTTER DOWNPIPE STRAP	57
100407	LOW PROFILE GUTTER SPLICE -16"	58
101141	COLONIAL GUTTER SPLICE - 16"	59

ROOF MOUNTING SYSTEMS ----- 60

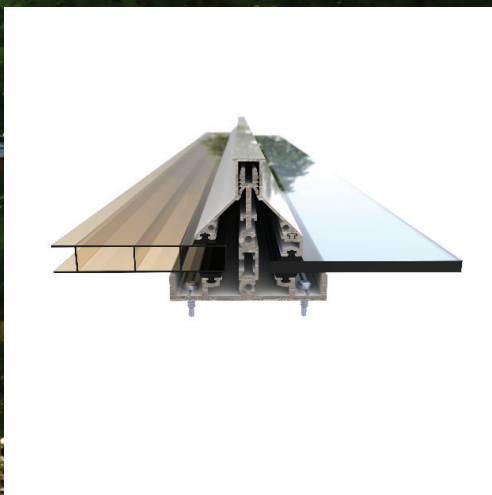
101335	ROOF RISER PACKAGE - HANGER	63
101714	ROOF MOUNT PACKAGE - HANGER	64
101728	ROOF RISER PACKAGE - BEAM	65
101729	ROOF MOUNT PACKAGE - BEAM (FORWARD)	66
101734	ROOF MOUNT PACKAGE - BEAM (ACROSS)	67
101798	SKYLIFT RISER TUBE ASSEMBLY	68
101800	SKYLIFT SADDLE BEAM	69
101804	SKYLIFT SADDLE HANGING RAIL	70
100419	Wall Mount Bracket	71
100400	HANGING RAIL WITH END CAPS	72
100411	HANGING RAIL SPLICE -16"	73

RETROFIT ----- 74

100442	LARGE F-SECTION	76
100579	Wall Flashing - 2 3/4" x 1 1/4" x 102"	77
103338	CLAMPING BAR UPPER ASSEMBLY	78
101741	CLAMPING SYSTEM COMPLETE ASSEMBLY	79
100604	WEATHER BLOCK WITH GASKET	80
100415	1 x 1 CORNER	81
100464	BEAM CORNER GUSSET	82
103363	Glass Rail with Vinyl Insert	83
100581	Gutter Flashing - 3 1/2" x 3/4" x 7/8" x 102"	84
101743	ACRYLITE® Wave	85
101761	Wave Profile Calottes	86

ACRYLITE PANELS

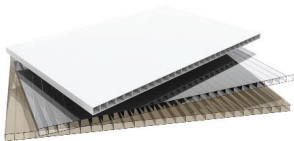
Produced from the most weatherable polymer on the market, ACRYLITE® acrylic sheet outperforms other covering products like fiberglass, polycarbonate and PVC products.



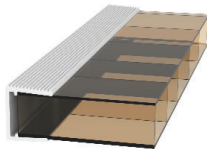
COVER YOUR SPACE

Make the sun your ally, not your enemy.

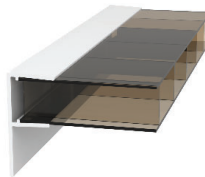
American Patio Concepts has perfected the way we see and feel the sun. Our covers feature ACRYLITE® acrylic panels, found nowhere else in the world. Customize the amount of light, heat and privacy of your outside space for a personalized outdoor-living experience.



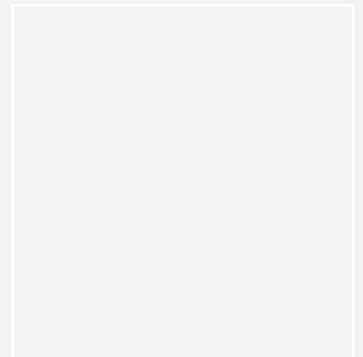
101718



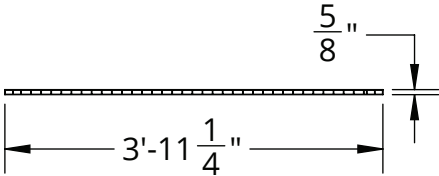
101740



102237



Front View



ACRYLITE®

Category: ACRYLITE

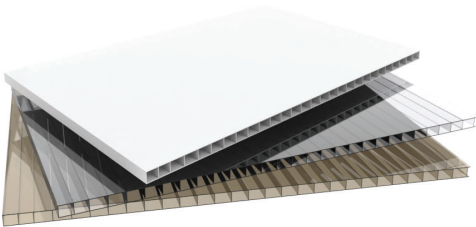
Part No.101718

Specifications:

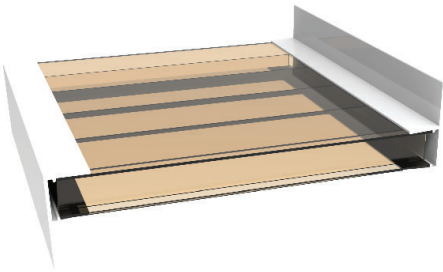
[CAD Download](#) | [PDF Download](#)

\$9.83/sqft.

Iso View



Detail View

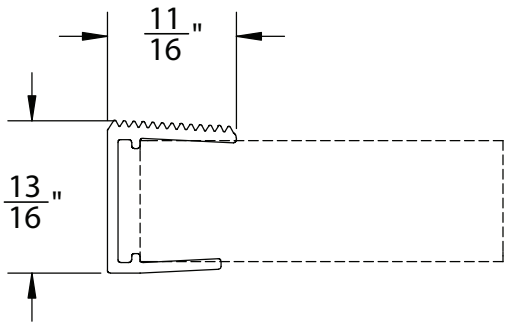


INCLUDED PARTS			
PROD. NO.	PART NO.	PART NAME	QTY
1	101718	ACRYLITE® CLEAR	1
2	101719	ACRYLITE® BRONZE	1
3	101720	ACRYLITE® - SOLAR COOL WHITE	1
4	101721	ACRYLITE® - HEATSTOP COOL BLUE	1
5	101722	ACRYLITE® - LIGHT WHITE	1
6	101723	ACRYLITE® - ENVIRO WHITE	1
7	101724	ACRYLITE® - ALLTOP CLEAR	1

Application Typical Installation



Front View



TERMINAL SECTION

Category: FLASHING

Part No. 101740

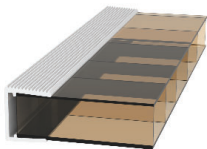
Specifications:

- Aluminum Section Used To Seal Open Ends Of 16 mm Double-Skin Acrylic Panels. Used In Extreme Pitches Or Where Alternative To F-Section Is Merited. Serrated Side To Restrict Water Flow Upwards On High End And Downward On Low End.

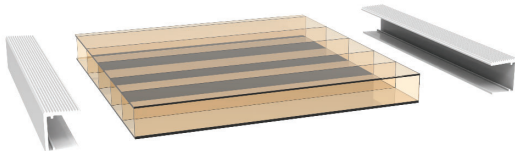
[CAD Download](#) | [PDF Download](#)

\$1.27/ft.

Iso View



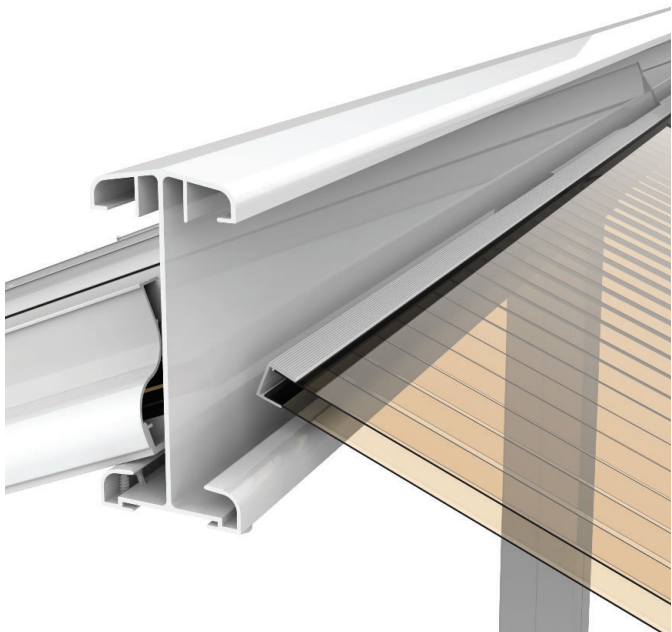
Detail View



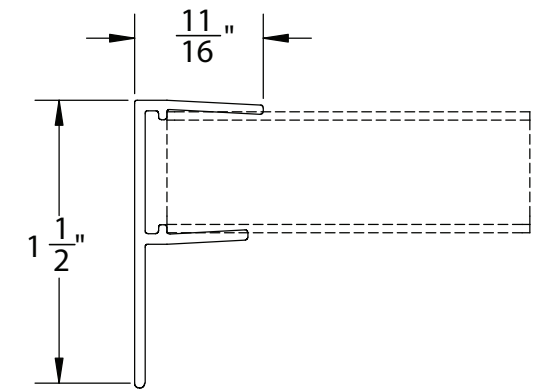
INCLUDED PARTS

PROD. NO.	PART NO.	PART NAME	QTY
1	101740	TERMINAL SECTION	1

Application Typical Installation



Front View



F-SECTION

Category:FLASHING

Part No.102237

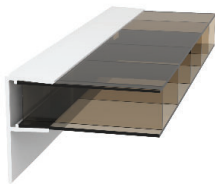
Specifications:

- Aluminum F-Section Used To Seal Open Ends Of 16 mm Double-Skin Acrylic Panels. Leg Directs Water Downward Into Gutter On Lower End Of Acrylic Panels And Oriented Upward To Stop Water Driving Up Into Hanger.

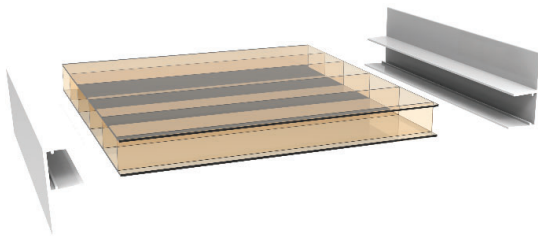
[CAD Download](#) | [PDF Download](#)

\$1.66/ft.

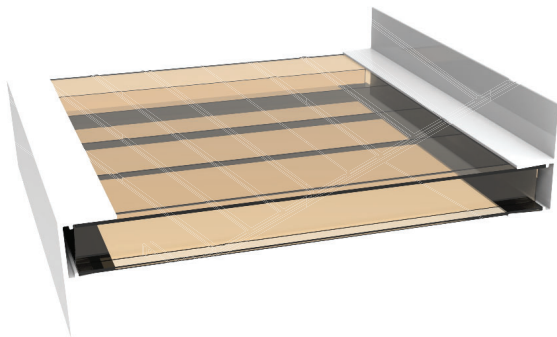
Iso View



Detail View



Application Typical Installation



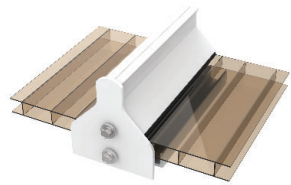
RAFTER SYSTEMS



There is no substitute for Nature

We have a need to feel the warmth of the sun and the breeze on our faces. We long for the peace and vitality of the outdoors, of life beyond walls. Changes to interior lighting, furniture, colors, etc will only go so far.

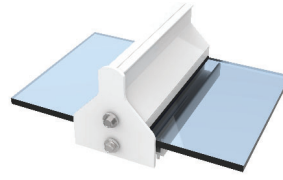
RAFTER SYSTEMS



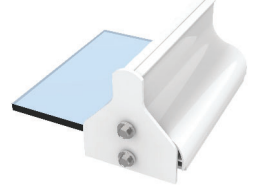
100433



100801

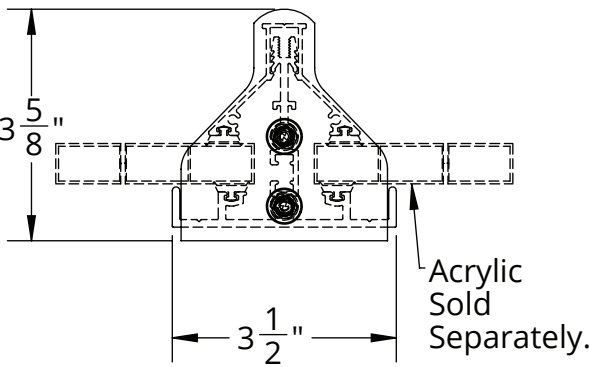


100802

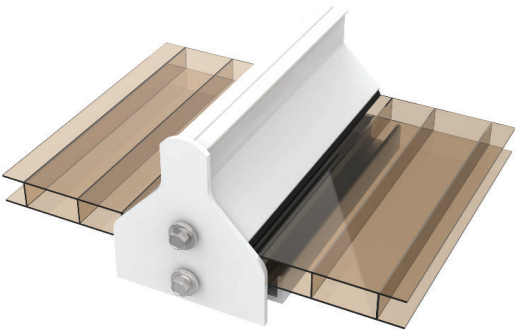


100803

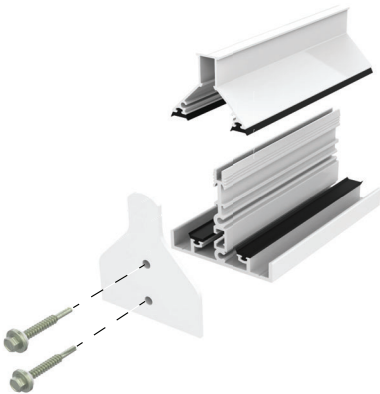
Front View



Iso View



Detail View



T-BAR RAFTER ASSEMBLY (ACRYLIC)

Category: RAFTER

Part No. 100433

Specifications:

- Intermediate Aluminum T-Bar Rafter Assembly For 16 mm(5/8") Glazing Includes: T-Bar Rafter, T-Bar Cap, Rubber Gasketing & End Cap.

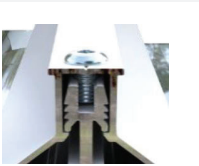
[CAD Download](#) | [PDF Download](#)

\$14.30/ft.

INCLUDED PARTS

NO.	PART NO.	PART NAME.	QTY	UNIT PRICE	UNIT
1	100331	T-BAR CAP	1	\$2.59	FT
2	100438	T-BAR RAFTER	1	\$7.80	FT
3	100468	T-BAR END CAP	1	\$4.82	EA
4	100290	RUBBER GASKET	4	\$0.32	FT
5	100590	SCREW, #12 X 1 1/2, HEX CAP, SELF TAP	2	\$0.30	EA

RELATED ITEMS



Optional T-Bar Rafter Fastening

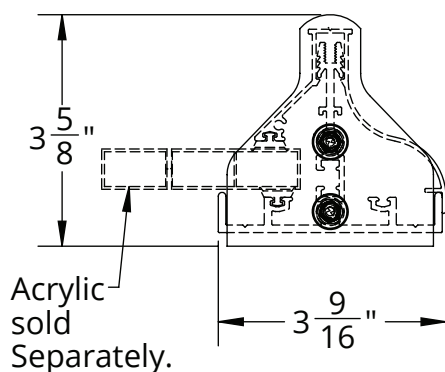
PRICING WILL VARY PER
ENGINEERING

NOT recommended for standard resi-
dential covers. Fasteners used to attach
Cap to T-Bar Rafter where engineering
calls for increase spans and/or loading
and for some commercial applications.

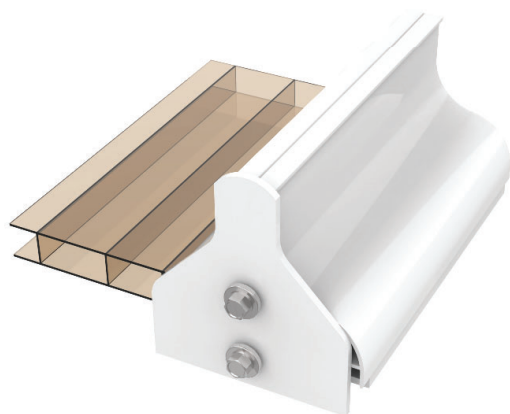
Application Typical Installation



Front View



Iso View



Detail View



T-BAR RAFTER FASCIA ASSEMBLY (ACRYLIC)

Category: RAFTER

Part No. 100801

Specifications:

- Outer Edge Aluminum T-Bar Rafter Assembly For 16 mm (5/8") Glazing Includes: T-Bar Rafter, Fascia Cap, Rubber Gasketing & End Cap

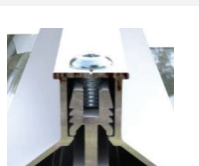
[CAD Download](#) | [PDF Download](#)

\$14.37/ft.

INCLUDED PARTS

NO.	PART NO.	PART NAME.	QTY	UNIT PRICE	UNIT
1	100444	T-BAR FASCIA CAP	1	\$2.59	FT
2	100438	T-BAR RAFTER	1	\$7.80	FT
3	100468	T-BAR END CAP	1	\$4.82	EA
4	100290	RUBBER GASKET	4	\$0.32	FT
5	100590	SCREW, #12 X 1 1/2, HEX CAP, SELF TAP	2	\$0.30	EA

RELATED ITEMS

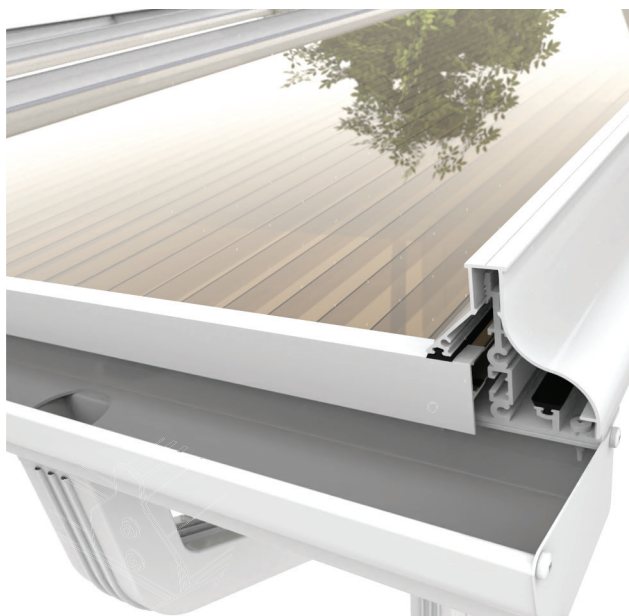


Optional T-Bar Rafter Fastening

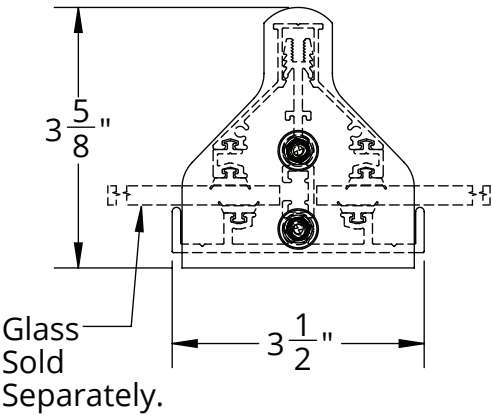
PRICING WILL VARY PER
ENGINEERING

NOT recommended for standard residential covers. Fasteners used to attach Cap to T-Bar Rafter where engineering calls for increase spans and/or loading and for some commercial applications.

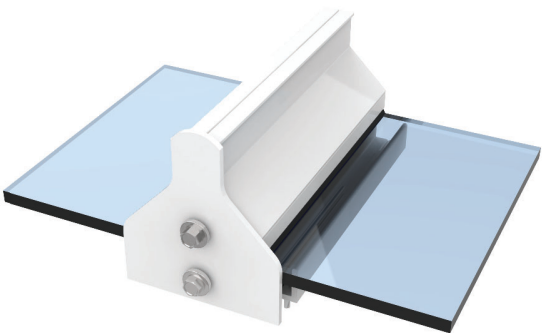
Application Typical Installation



Front View



Iso View



Detail View



T-BAR RAFTER ASSEMBLY (GLASS)

Category: RAFTER

Part No. 100802

Specifications:

- Intermediate Aluminum T-Bar Rafter Assembly For 6 mm (1/4") Glazing Includes: T-Bar Rafter, T-Bar Cap, Glass Spline Insert, Rubber Gasketing & End Cap.

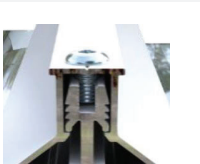
[CAD Download](#) | [PDF Download](#)

\$16.17/ft.

INCLUDED PARTS

NO.	PART NO.	PART NAME.	QTY	UNIT PRICE	UNIT
1	100331	T-BAR CAP	1	\$2.59	FT
2	100438	T-BAR RAFTER	1	\$7.80	FT
3	100373	T-BAR GLASS SPLINE	2	\$1.60	FT
4	100468	T-BAR END CAP	1	\$4.82	EA
5	100290	RUBBER GASKET	4	\$0.32	FT
6	100590	SCREW, #12 X 1 1/2, HEX CAP, SELF TAP	2	\$0.30	EA

RELATED ITEMS



Optional T-Bar Rafter Fastening

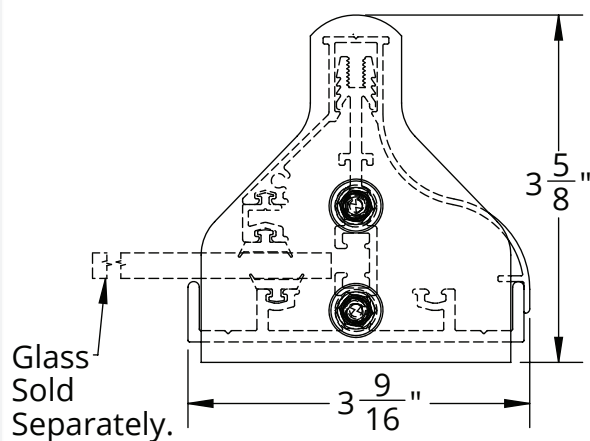
PRICING WILL VARY PER
ENGINEERING

NOT recommended for standard residential covers. Fasteners used to attach Cap to T-Bar Rafter where engineering calls for increase spans and/or loading and for some commercial applications.

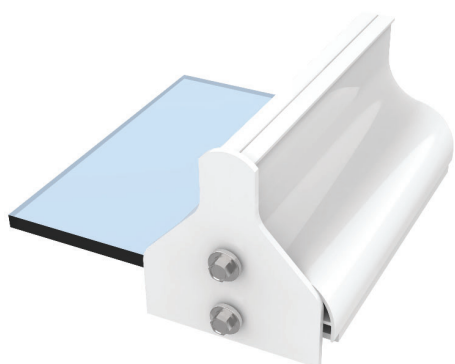
Application Typical Installation



Front View



Iso View



Detail View



T-BAR RAFTER FASCIA ASSEMBLY (GLASS)

Category: RAFTER

Part No.100803

Specifications:

- Outer Edge Aluminum T-Bar Rafter Assembly For 6 mm (1/4") Glazing Includes: T-Bar Rafter, Fascia Cap, Glass Spline Insert, Rubber Gasketing & End Cap.

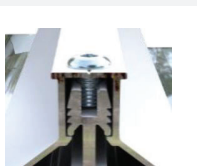
[CAD Download](#) | [PDF Download](#)

\$15.30/ft.

INCLUDED PARTS

NO.	PART NO.	PART NAME.	QTY	UNIT PRICE	UNIT
1	100444	T-BAR FASCIA CAP	1	\$2.59	FT
2	100438	T-BAR RAFTER	1	\$7.80	FT
3	100373	T-BAR GLASS SPLINE	1	\$1.60	FT
4	100468	T-BAR END CAP	1	\$4.82	EA
5	100290	RUBBER GASKET	4	\$0.32	FT
6	100590	SCREW, #12 X 1 1/2, HEX CAP, SELF TAP	2	\$0.30	EA

RELATED ITEMS



Optional T-Bar Rafter Fastening

PRICING WILL VARY PER
ENGINEERING

NOT recommended for standard residential covers. Fasteners used to attach Cap to T-Bar Rafter where engineering calls for increase spans and/or loading and for some commercial applications.

Application Typical Installation



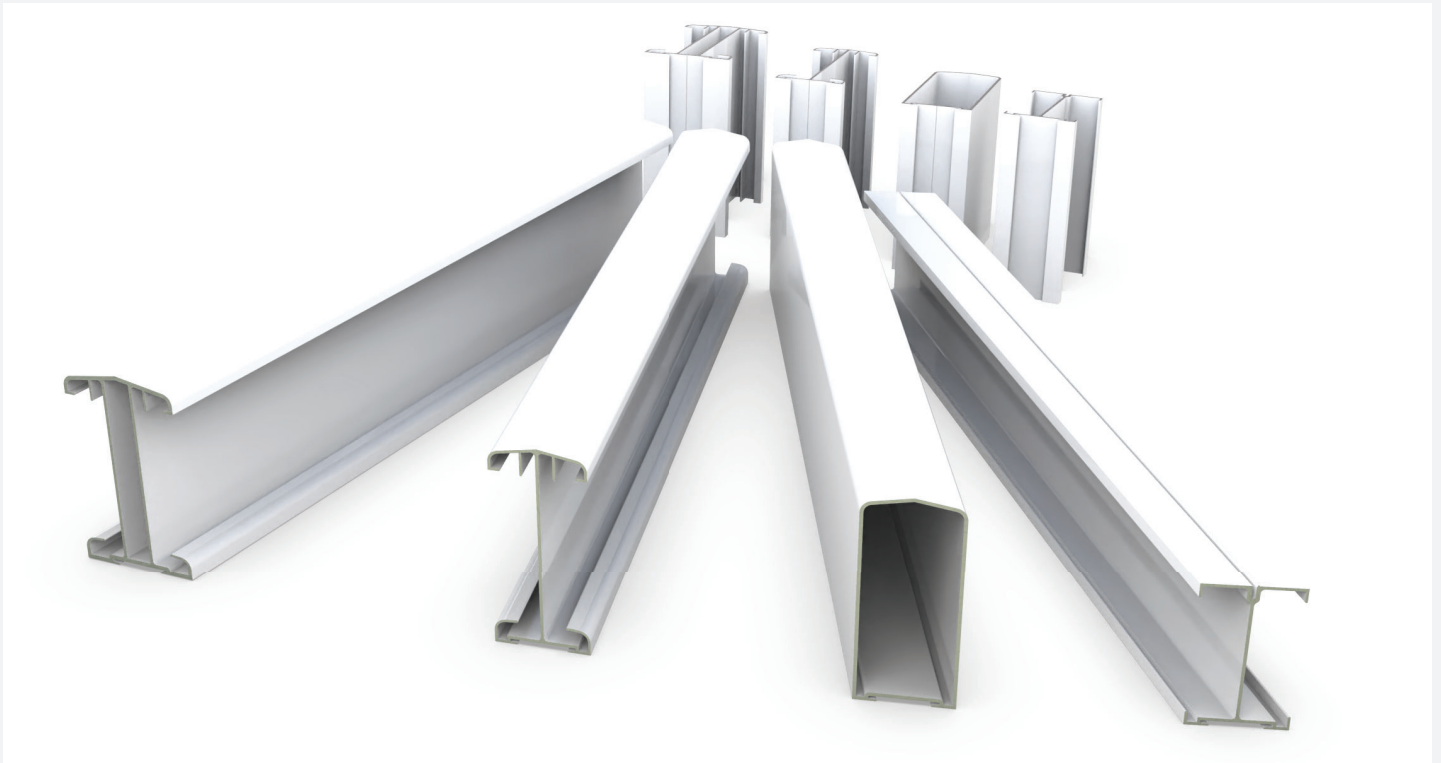


BEAM SUPPORTS

Expand and refine your living space

We develop products that elevate the outdoor-living experience with visual simplicity and quiet sophistication. Our designs compliment both architecture and landscape. Inspired by the outdoors, we create beautiful additions to homes that relax the soul while enhancing value. Our custom structures place you in harmony with the environment just outside your home.

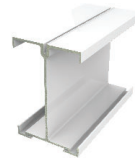
BEAMS



100340



100365



100394



100427



100543



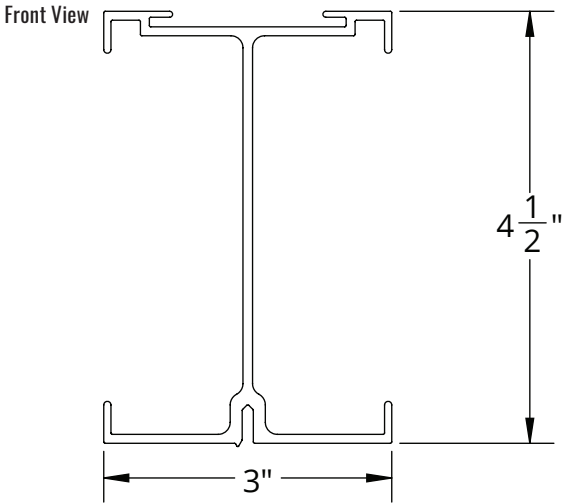
100854



100855



100895



LIGHT DUTY BEAM

Category: BEAM

Part No.100340

Specifications:

- Lighter Beam For Smaller Covers And Spans. Also Used As Horizontal Base For Framing Gable Ends.

[CAD Download](#) | [PDF Download](#)

\$7.93/ft.

INCLUDED PARTS

PROD. NO.	PART NO.	PART NAME	QTY
1	100340	LIGHT DUTY BEAM	1

Iso View



RELATED ITEMS



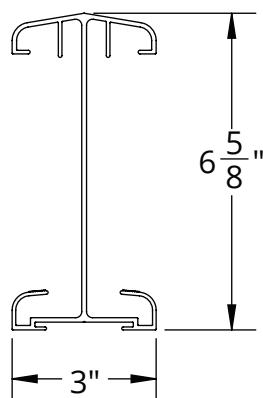
Application Typical Installation



Detail View



Front View



HEAVY DUTY BEAM

Category: BEAM

Part No. 100365

Specifications:

- Heavy Duty Beam Used As The Standard In Both Shed & Gable Covers. Pitched Top To Accommodate Various Roof Pitches. Channeled Lower Section To Hide Fasteners When Used As The Gable Ridge.

[CAD Download](#) | [PDF Download](#)

\$9.96/ft.

INCLUDED PARTS

PROD. NO.	PART NO.	PART NAME	QTY
1	100365	HEAVY DUTY BEAM	1

Iso View



RELATED ITEMS



100854

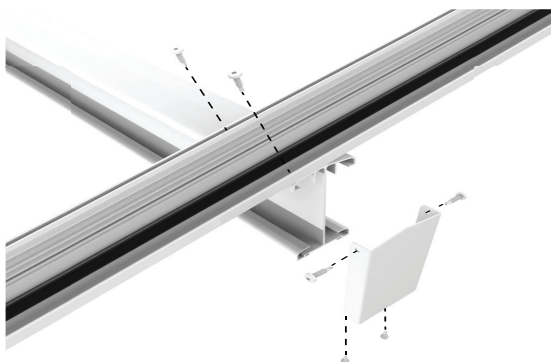


100423



100429

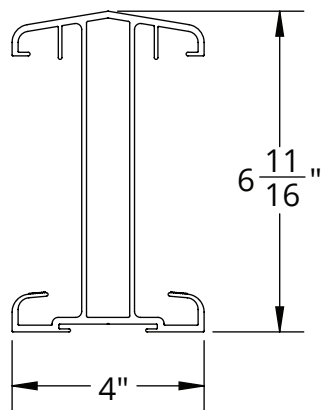
Detail View



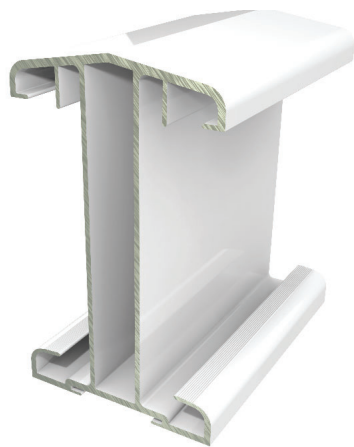
Application Typical Installation



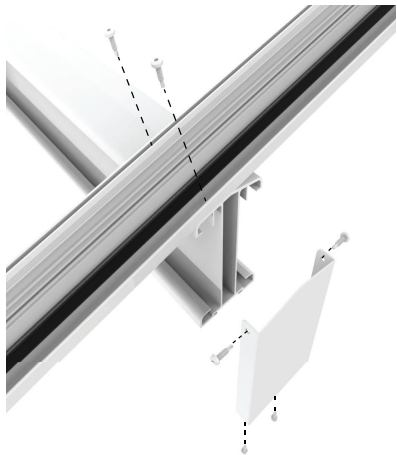
Front View



Iso View



Detail View



TWIN WALL BEAM

Category: BEAM

Part No. 100394

Specifications:

- Similar In Design To The Heavy Duty Beam. Can Be Substituted In Both Shed & Gable Covers And As The Gable Ridge. Twin Wall Design Allows For Greater Spans Between Supports.

[CAD Download](#) | [PDF Download](#)

\$18.26/ft.

INCLUDED PARTS			
PROD. NO.	PART NO.	PART NAME	QTY
1	100394	TWIN WALL BEAM	1

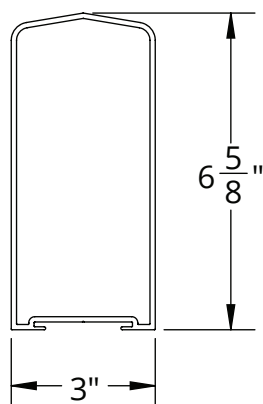
RELATED ITEMS



Application Typical Installation



Front View



BOX BEAM

Category: BEAM

Part No. 100427

Specifications:

- Unique Clean Box Design As An Alternative To the Heavy Duty Beam. Ideal For Header For Sunroom Roofs Or Where Architectural Design Or Personal Preference Dictates.

[CAD Download](#) | [PDF Download](#)

\$14.19/ft.

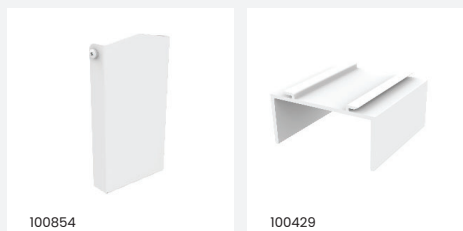
INCLUDED PARTS

PROD. NO.	PART NO.	PART NAME.	QTY
1	100427	BOX BEAM	1

Iso View



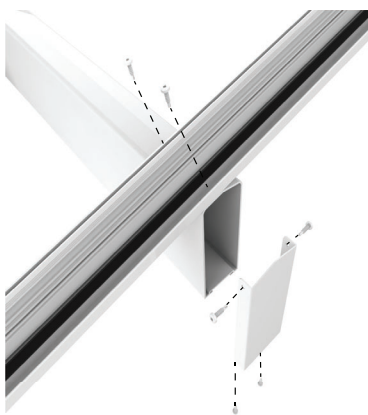
RELATED ITEMS



100854

100429

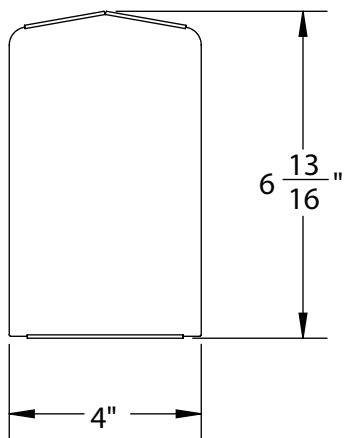
Detail View



Application Typical Installation



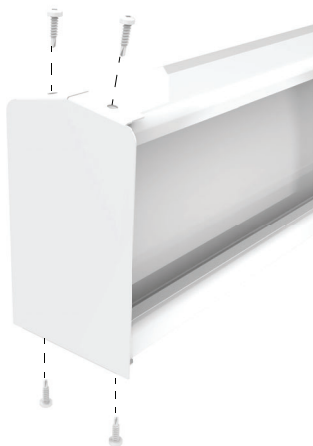
Front View



Iso View



Detail View



RIDGE BEAM COVER

Category: BEAM

Part No. 100543

Specifications:

- Formed Aluminum Plate Cleanly Covers The End Of Ridge Beams Used In Gable Covers.

[CAD Download](#) | [PDF Download](#)

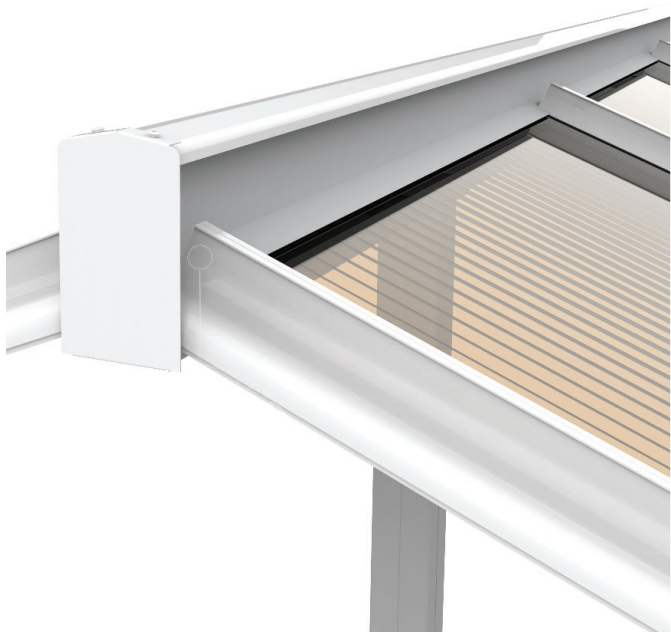
\$9.40/pkg.

INCLUDED PARTS			
PROD. NO.	PART NO.	PART NAME	QTY
1	100543	RIDGE BEAM COVER	1
2	100591	SCREW, #10 X 3/4, BUTTON, SQUARE, SELF TAP	4

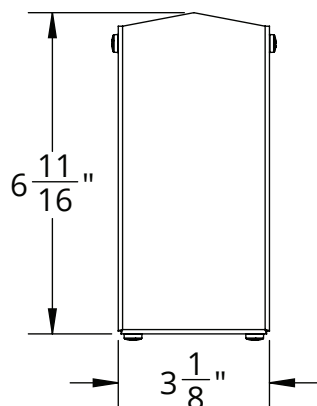
RELATED ITEMS



Application Typical Installation



Front View



HEAVY DUTY BEAM 90 DEGREE END CAP

Category: BEAM

Part No.100854

Specifications:

- Finish Ends Of The Heavy Duty Beam When Cut Squarely.

[CAD Download](#) | [PDF Download](#)

\$8.01/pkg.

INCLUDED PARTS

PROD. NO.	PART NO.	PART NAME	QTY
1	100486	HEAVY DUTY BEAM 90 DEGREE END CAP	1
2	100591	SCREW, #10 X 3/4, BUTTON, SQUARE, SELF TAP	4

Iso View

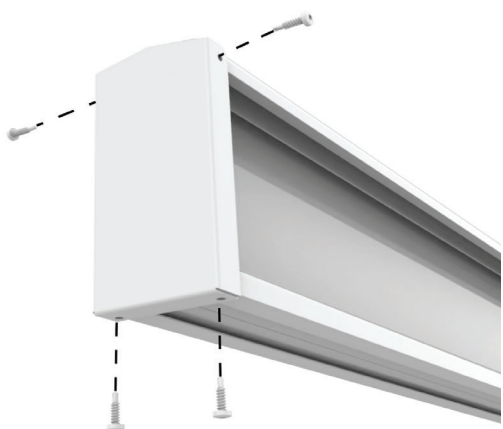


RELATED ITEMS



100365

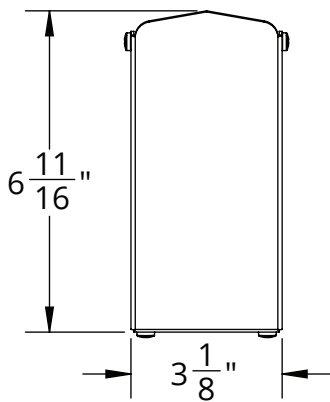
Detail View



Application Typical Installation



Front View



Iso View



Detail View



HEAVY DUTY BEAM 22.5 DEGREE END CAP

Category: BEAM

Part No. 100855

Specifications:

- Finish Ends Of The Heavy Duty Beam When Miter Cut.

[CAD Download](#) | [PDF Download](#)

\$8.42/pkg.

INCLUDED PARTS

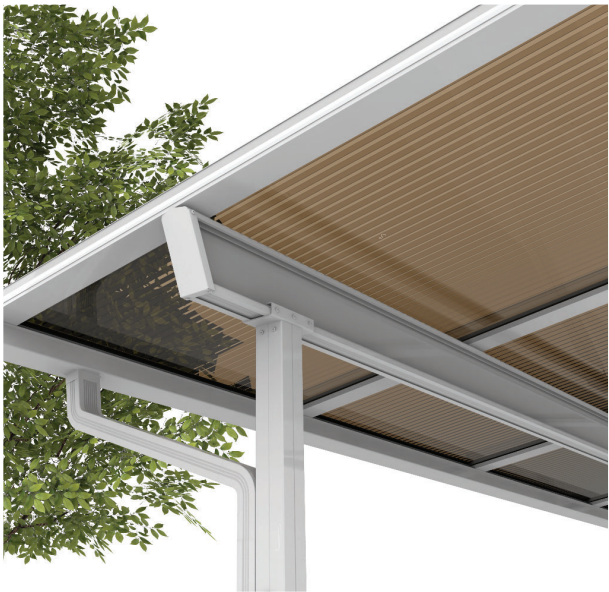
PROD. NO.	PART NO.	PART NAME	QTY
1	100482	HEAVY DUTY BEAM 22.5 DEGREE END CAP	1
2	100591	SCREW, #10 X 3/4, BUTTON, SQUARE, SELF TAP	4

RELATED ITEMS

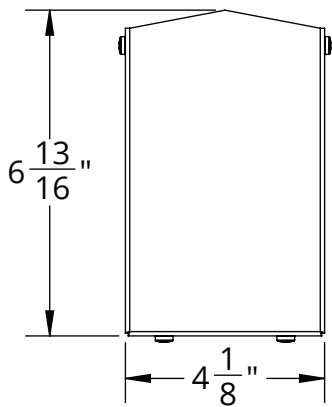


100365

Application Typical Installation



Front View



Iso View



Detail View



TWIN WALL BEAM 90 DEGREE END CAP

Category: BEAM

Part No.100895

Specifications:

- Finish Ends Of The Twin Wall Beam When Cut Squarely.

[CAD Download](#) | [PDF Download](#)

\$8.49/pkg.

INCLUDED PARTS			
PROD. NO.	PART NO.	PART NAME	QTY
1	100499	TWIN WALL BEAM 90 DEGREE END CAP	1
2	100591	SCREW, #10 X 3/4, BUTTON, SQUARE, SELF TAP	4

RELATED ITEMS

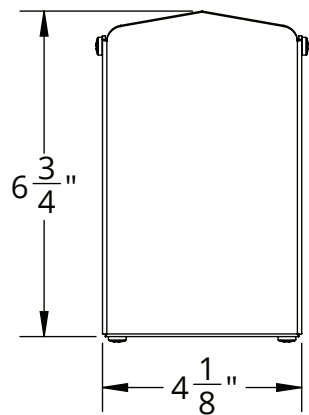


100394

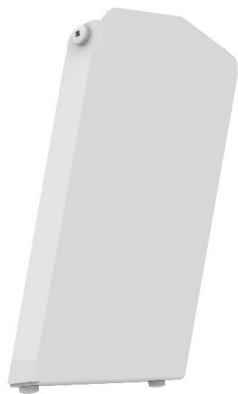
Application Typical Installation



Front View



Iso View



Detail View



TWIN WALL BEAM 22.5 DEGREE END CAP

Category: BEAM

Part No. 100919

Specifications:

- Finish Ends Of The Twin Wall Beam When Miter Cut.

[CAD Download](#) | [PDF Download](#)

\$9.56/pkg.

INCLUDED PARTS

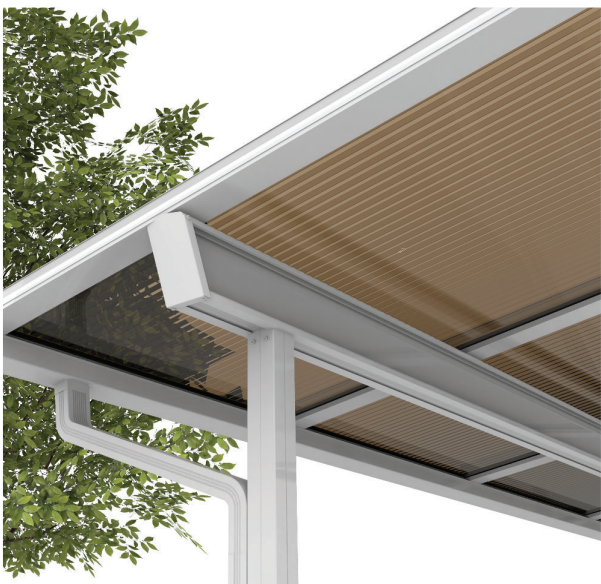
PROD. NO.	PART NO.	PART NAME	QTY
1	100501	TWIN WALL BEAM 22.5 DEGREE END CAP	1
2	100591	SCREW, #10 X 3/4, BUTTON, SQUARE, SELF TAP	4

RELATED ITEMS

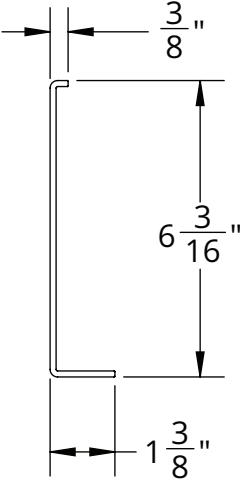


100394

Application Typical Installation



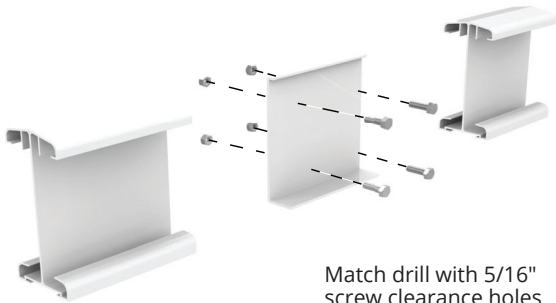
Front View



Iso View



Detail View



HEAVY DUTY BEAM SPLICE - 16"

Category: SPLICE

Part No.100405

Specifications:

- Insertable Aluminum Splice To Connect Two Sections Of Heavy Duty Beam Where Lengths Over 24 Foot Lengths Are Required.

[CAD Download](#) | [PDF Download](#)

\$13.56/ft.

INCLUDED PARTS

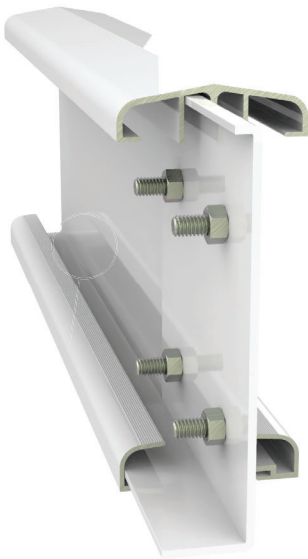
PROD. NO.	PART NO.	PART NAME.	QTY
1	100407	HEAVY DUTY BEAM SPLICE - 16"	1

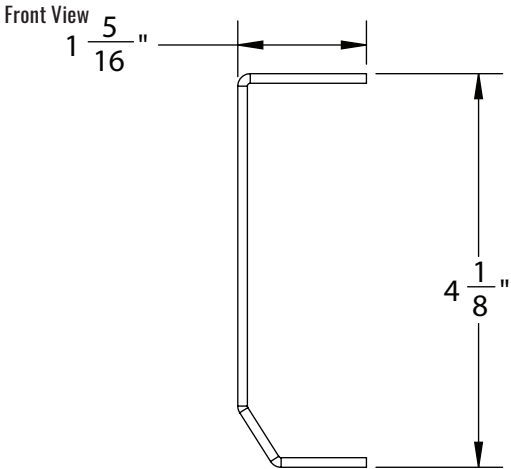
RELATED ITEMS



100365

Application Typical Installation





LIGHT DUTY BEAM SPLICE

Category: SPLICE

Part No.100537

Specifications:

- Insertable Aluminum Splice To Connect Two Sections Light Duty Beam Where Lengths Over 24 Foot Are Required.

[CAD Download](#) | [PDF Download](#)

\$17.72/ea.

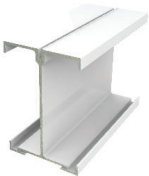
INCLUDED PARTS

PROD. NO.	PART NO.	PART NAME.	QTY
1	100537	LIGHT DUTY BEAM SPLICE	1

Iso View

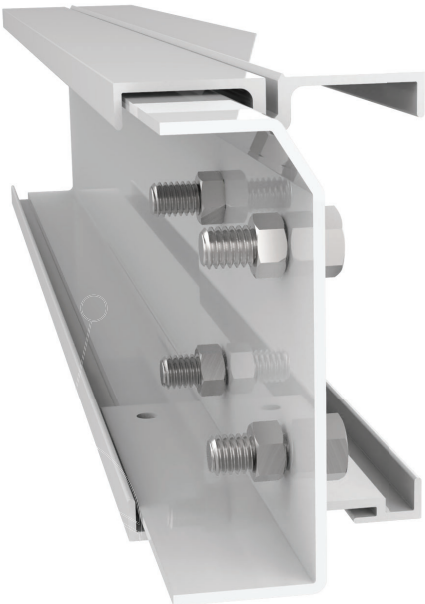


RELATED ITEMS



100340

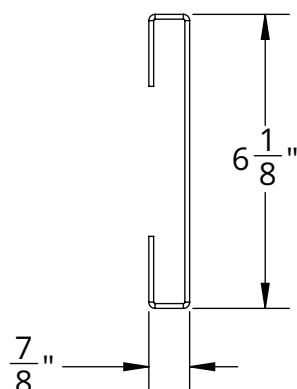
Application Typical Installation



Detail View



Front View



TWIN WALL BEAM SPLICE

Category: SPLICE

Part No. 100531

Specifications:

- Insertable Aluminum Splice To Connect Two Sections Of Hanging Rail Where Over 24 Foot Are Required.

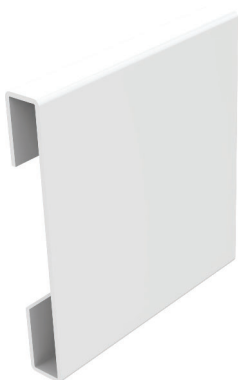
[CAD Download](#) | [PDF Download](#)

\$22.82/ea.

INCLUDED PARTS

PROD. NO.	PART NO.	PART NAME	QTY
1	100531	TWIN WALL BEAM SPLICE	1
2			
3			

Iso View



RELATED ITEMS

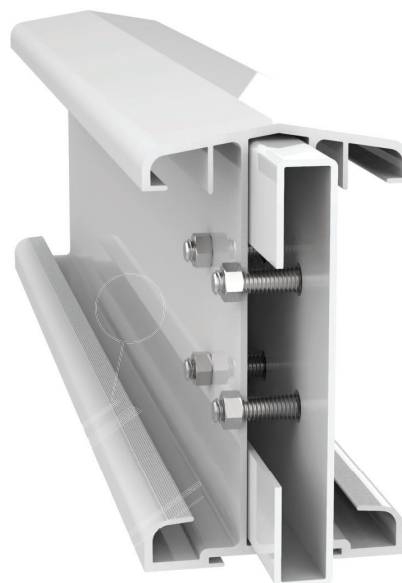


100394

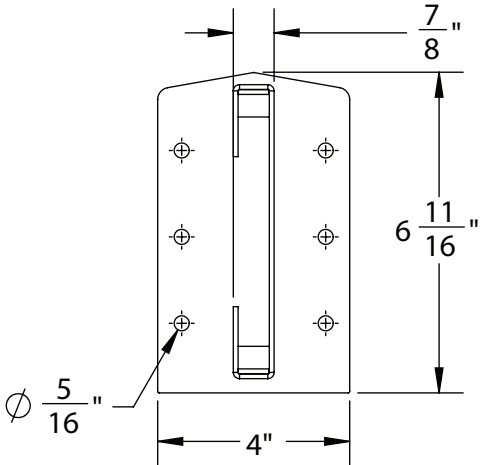
Detail View



Application Typical Installation



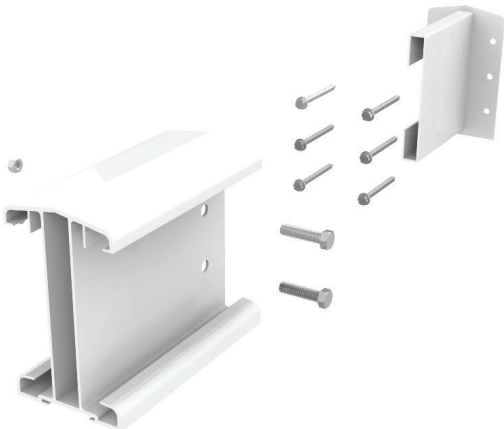
Front View



Iso View



Detail View



TWIN WALL MOUNTING BRACKET

Category: ACCESSORY

Part No.100573

Specifications:

- Heavy Aluminum Bracket Used To Mount Twin Wall Beams Directly To Existing Structures.

[CAD Download](#) | [PDF Download](#)

\$35.06/ea.

INCLUDED PARTS

PROD. NO.	PART NO.	PART NAME	QTY
1	100573	TWIN WALL MOUNTING BRACKET	1
2			
3			

RELATED ITEMS

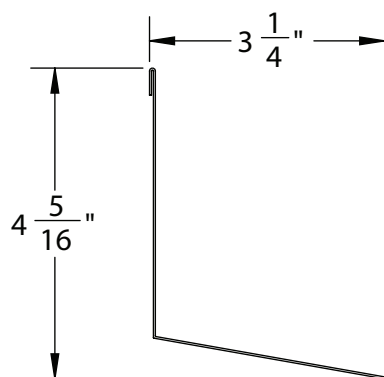


100394

Application Typical Installation



Front View



RIDGE FLASHING - 3 3/4" X 3 1/4" X 102"

Category: FLASHING

Part No. 100577

Specifications:

- Formed Aluminum Flashing Used In Gable Ridge Beams And In Shed Covers Where Beam Is Used In Place Of Hanging Rail.

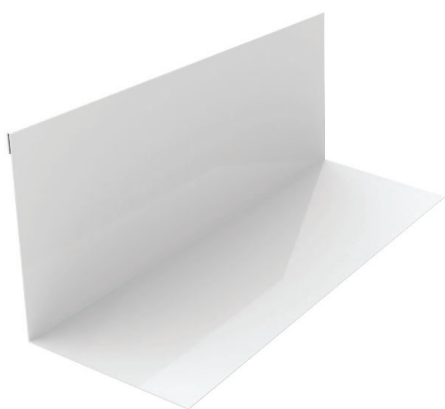
[CAD Download](#) | [PDF Download](#)

\$20.54/ea.

INCLUDED PARTS

PROD. NO.	PART NO.	PART NAME	QTY
1	100577	RIDGE FLASHING - 3 3/4" X 3 3/4" X 102"	1

Iso View



RELATED ITEMS

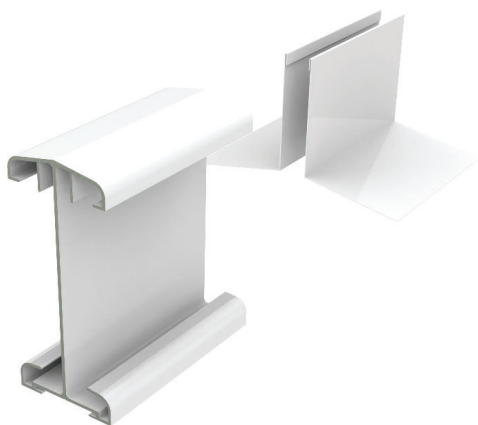


100394

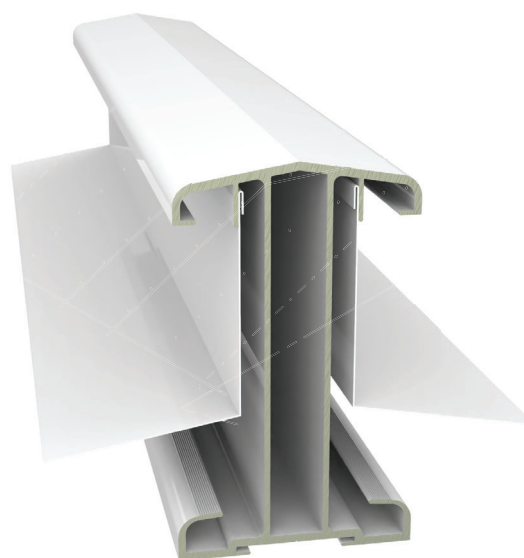


100365

Detail View



Application Typical Installation





POST COMPONENTS

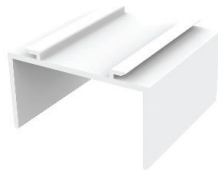
Expand your space

Don't feel trapped inside anymore. Our covers opens and expands the space where you feel at home. We design and craft our covers to fit your unique style and surroundings. American Patio Concepts takes a keen interest in the ease of installation of our products. We obsess over the manufacturing process for a problem-free installation.

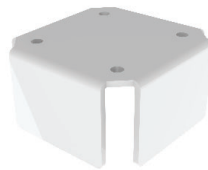
POST ACCESSORIES



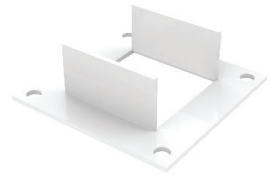
100425



100429



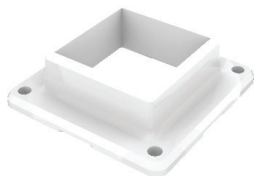
100523



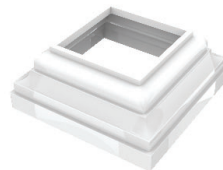
100533



103495

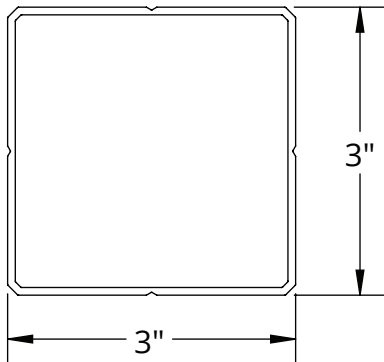


100282



100280

Front View



Iso View



Detail View



PATIO COVER POST

Category: MOUNT
Part No. 100425, 101934, 101935 & 103341
Specifications:

- Square Extruded Post, Beveled On Each Of The Four Corners. Standard With All Covers.

[CAD Download](#) | [PDF Download](#)

- 1. \$6.52/ft.
- 2. \$51.14/ea.
- 3. \$60.17/ea.
- 4. \$72.20/ea.

INCLUDED PARTS			
PROD. NO.	PART NO.	PART NAME.	QTY
1	100425	PATIO COVER POST	1
2	100280	PATIO COVER POST - 102"	1
3	101935	PATIO COVER POST - 120"	1
4	103341	PATIO COVER POST - 144"	1

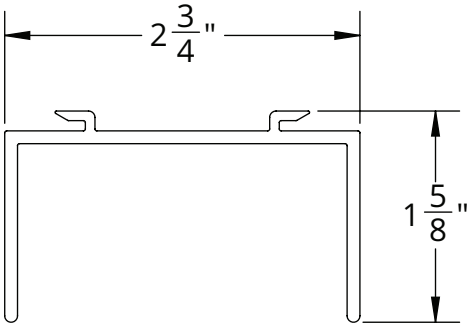
RELATED ITEMS



Application Typical Installation



Front View



POST TOP SHOE (EXTRUDED) - 3"

Category: COVER

Part No. 100429

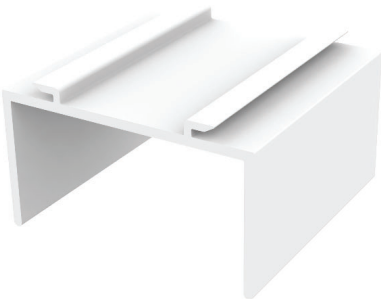
Specifications:

- Unique Top Shoe Inserts Into Channel On Underside Of Beams And Slides Along Length Of Beam To Desired Position.

[CAD Download](#) | [PDF Download](#)

\$1.71/ea.

Iso View



Detail View



INCLUDED PARTS

PROD. NO.	PART NO.	PART NAME	QTY
1	100429	POST TOP SHOE (EXTRUDED) - 3"	1

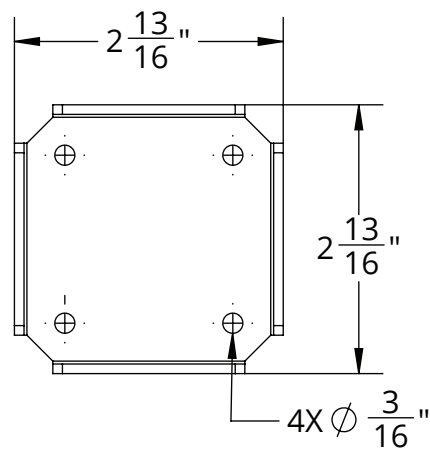
RELATED ITEMS



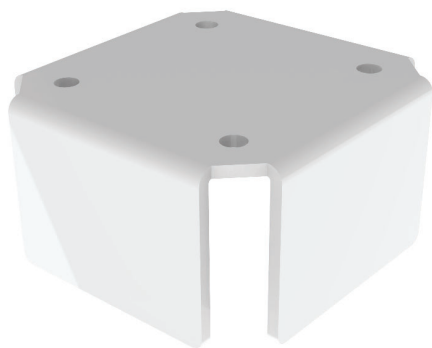
Application Typical Installation



Front View



Iso View



Detail View



INTERNAL TOP/BOTTOM POST SHOE

Category: MOUNT

Part No. 100523

Specifications:

- Bracket Attaches To Beam Or Post Mounting Surface And Inserts Fully Into Patio Cover Post To Become Completely Concealed.

[CAD Download](#) | [PDF Download](#)

\$6.99/ea.

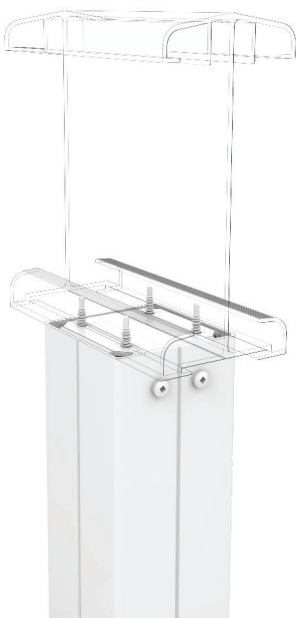
INCLUDED PARTS

PROD. NO.	PART NO.	PART NAME	QTY
1	100523	INTERNAL TOP/BOTTOM POST SHOE	1

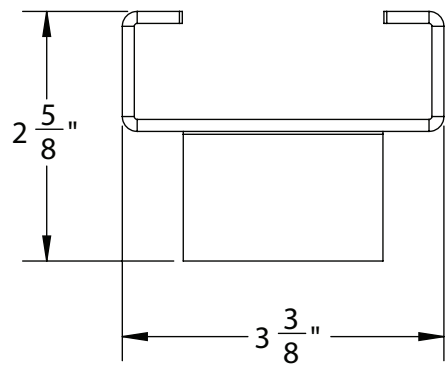
RELATED ITEMS



Application Typical Installation



Front View



Iso View



Detail View



UNIVERSAL BEAM POST BRACKET

Category: MOUNT

Part No. 103495

Specifications:

- Unique Top Shoe Inserts Into Channel On Underside Of Beams And Slides Along Length Of Beam To Desired Position.

[CAD Download](#) | [PDF Download](#)

\$12.86/ea.

INCLUDED PARTS			
PROD. NO.	PART NO.	PART NAME.	QTY
1	100429	POST TOP SHOE (EXTRUDED) -3"	1

RELATED ITEMS

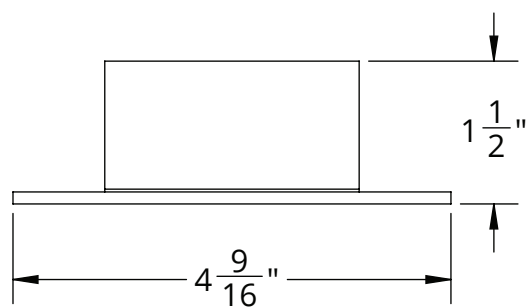


100425

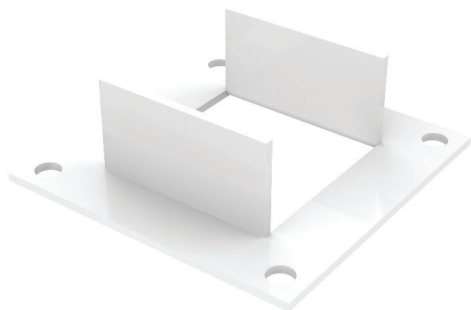
Application Typical Installation



Front View



Iso View



Detail View



POST BASE SHOE

Category: SHOE

Part No. 100533

Specifications:

- Post Base For Mounting Directly To Deck Or Slab. Upper Legs Insert Into Patio Cover Beveled Post.

[CAD Download](#) | [PDF Download](#)

\$8.15/ea.

INCLUDED PARTS

PROD. NO.	PART NO.	PART NAME	QTY
1	100533	POST-BASE SHOE	1

RELATED ITEMS

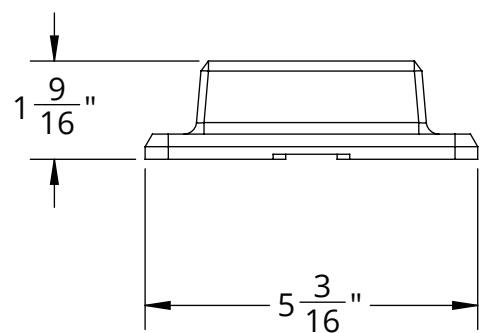


100425

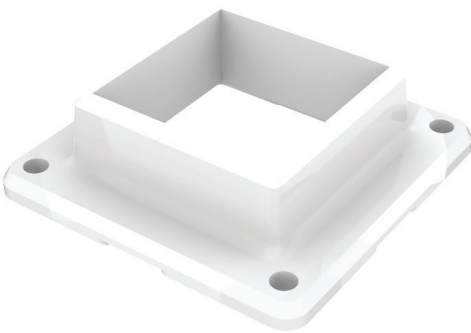
Application Typical Installation



Front View



Iso View



Detail View



3" POST BASE (CAST)

Category: CAP

Part No. 100282

Specifications:

- Alternative Patio Cover Post Base.

[CAD Download](#) | [PDF Download](#)

\$10.47/ea.

INCLUDED PARTS			
PROD. NO.	PART NO.	PART NAME	QTY
1	100282	3" POST BASE (CAST)	1

RELATED ITEMS

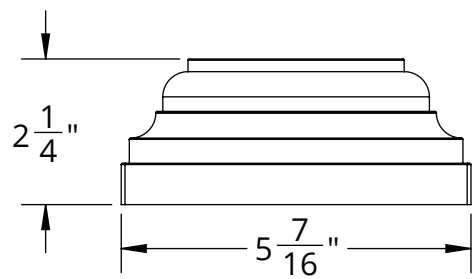


100425

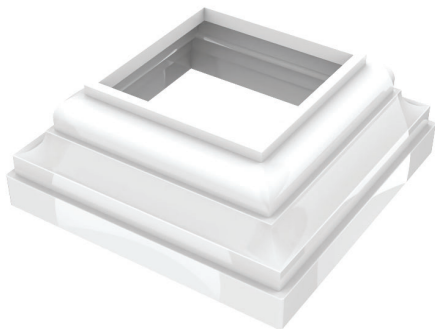
Application Typical Installation



Front View



Iso View



Detail View



POST BASE SHOE COVER

Category: COVER

Part No. 100280

Specifications:

- Decorative Cover For Post Base Shoe to Conceal Fasteners.

[CAD Download](#) | [PDF Download](#)

\$10.47/ea.

INCLUDED PARTS

PROD. NO.	PART NO.	PART NAME	QTY
1	100280	POST BASE SHOE COVER	1

RELATED ITEMS



100425

Application Typical Installation



GUTTER SYSTEMS

A two-story house with grey horizontal siding and white trim. A large black metal pergola with white panels covers the front porch area. The house has a dark grey shingled roof with a silver vent pipe. The front yard is landscaped with green grass, several rounded green bushes, and various plants. A wooden deck with steps leads to the front door. In the background, there is a dense forest of tall evergreen trees.

DEFINE YOUR SPACE

Enjoy the open air with comfort

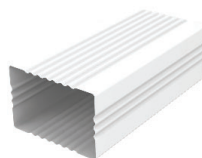
GUTTER ACCESSORIES



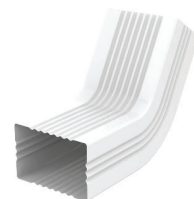
100385



101142



102057



102060



102061



102062

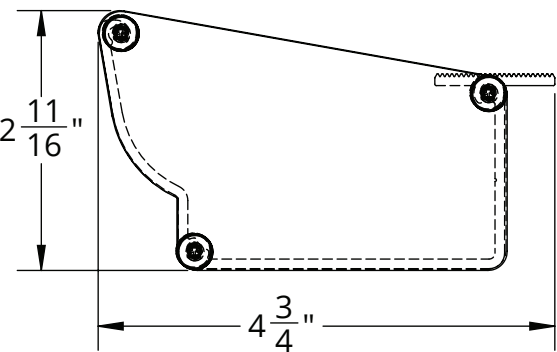


100407



101141

Front View



LOW PROFILE GUTTER WITH END CAPS

Category: GUTTER

Part No. 100385

Specifications:

- Low Outer Face In Line With 16 mm Glazing To Prevent Potential Accumulation Of Snow On Cover.

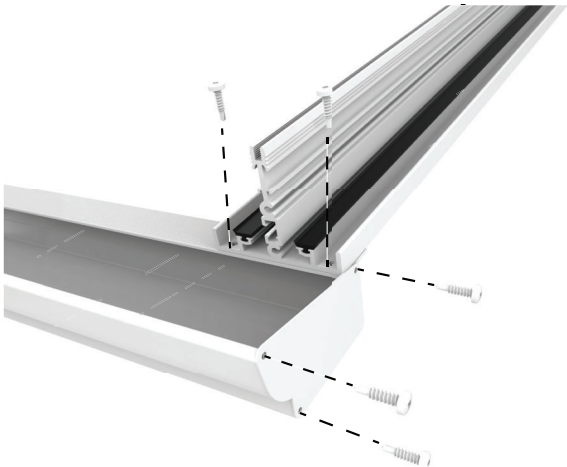
[CAD Download](#) | [PDF Download](#)

\$7.93/ft.

Iso View

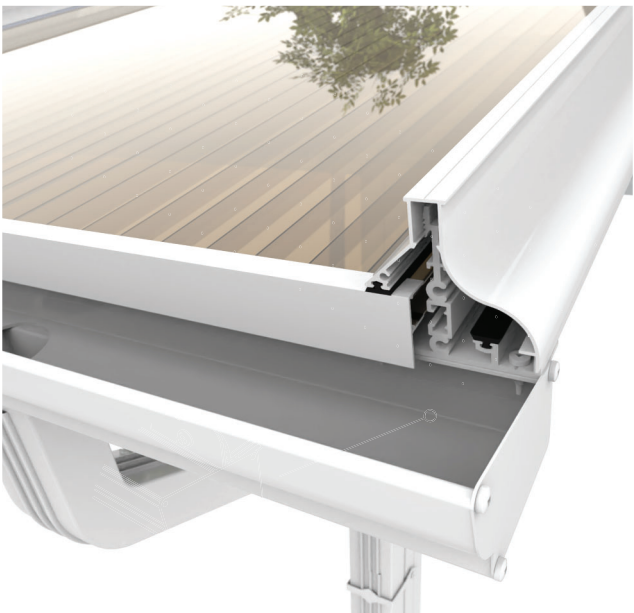


Detail View

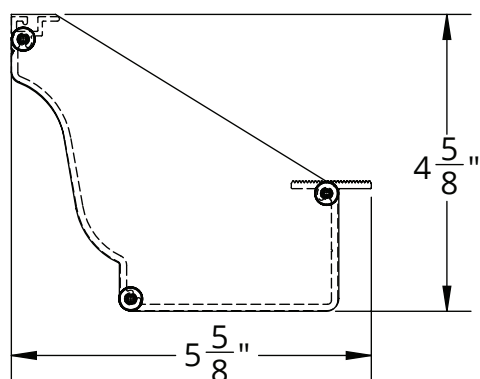


INCLUDED PARTS			
PROD. NO.	PART NO.	PART NAME	QTY
1	100386	LOW PROFILE GUTTER	1
2	100490	LOW PROFILE GUTTER END CAP	2
3	100591	SCREW, #10 X 3/4, BUTTON, SQUARE, SELF TAP	6
4	102061	2 x 3 Gutter Downpipe Outlet	1
5	102057	2 x 3 Gutter Downpipe -10'	1
6	102060	2 x 3 Gutter Downpipe Elbow	2
7	102062	2 x 3 Gutter Downpipe Strap	2

Application Typical Installation



Front View



COLONIAL GUTTER WITH END CAPS

Category: GUTTER

Part No. 101142

Specifications:

- Heavy Duty Extruded Gutter Designed To Visually Mirror Appearance Of Conventional Gutters.

[CAD Download](#) | [PDF Download](#)

\$11.29/ft.

Iso View



INCLUDED PARTS

PROD. NO.	PART NO.	PART NAME	QTY
1	100403	COLONIAL GUTTER	1
2	100488	COLONIAL GUTTER END CAP	2
3	100591	SCREW, #10 X 3/4, BUTTON, SQUARE, SELF TAP	6
4	102061	2 x 3 Gutter Downpipe Outlet	1
5	102057	2 x 3 Gutter Downpipe -10'	1
6	102060	2 x 3 Gutter Downpipe Elbow	2
7	102062	2 x 3 Gutter Downpipe Strap	2

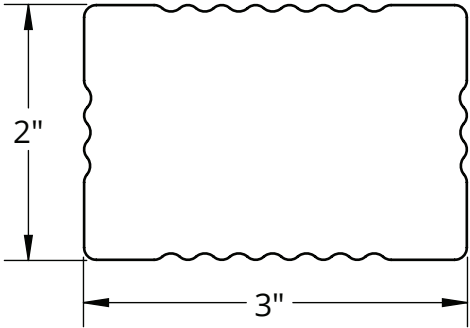
Detail View



Application Typical Installation



Front View



2 x 3 GUTTER DOWNPIPE -10'

Category: GUTTER

Part No. 102057

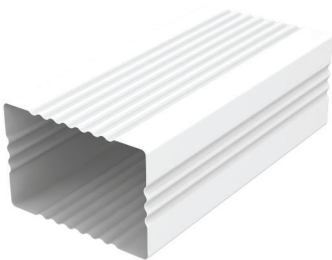
Specifications:

- Conventional Formed Aluminum Gutter Downpipe.

[CAD Download](#) | [PDF Download](#)

\$16.81/ea.

Iso View



INCLUDED PARTS

PROD. NO.	PART NO.	PART NAME.	QTY
1	102057	2 x 3 GUTTER DOWNPIPE -10'	1

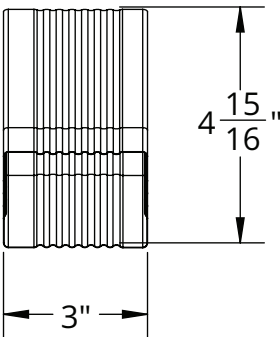
Detail View



Application Typical Installation



Front View



2 x 3 GUTTER DOWNPIPE ELBOW

Category: GUTTER

Part No. 102060

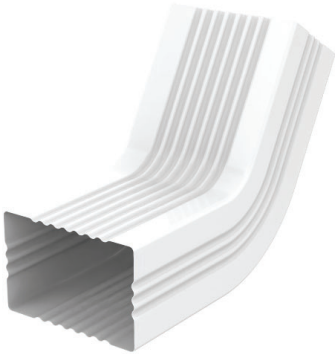
Specifications:

- Conventional Formed Aluminum 135° Gutter Downpipe Elbows.

[CAD Download](#) | [PDF Download](#)

\$1.97/ea.

Iso View



Detail View



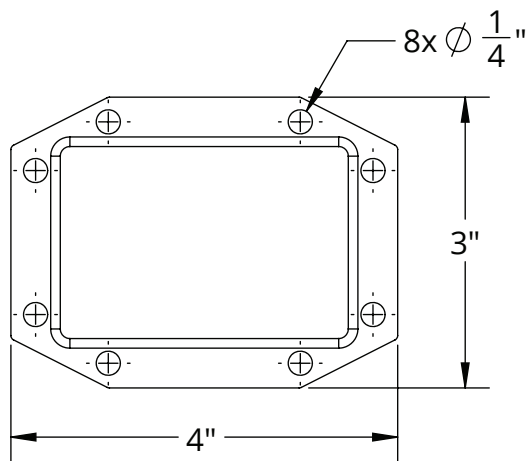
INCLUDED PARTS

PROD. NO.	PART NO.	PART NAME	QTY
1	102060	GUTTER DOWNPIPE ELBOW	1

Application Typical Installation



Front View



2 x 3 GUTTER DOWNPIPE OUTLET

Category: GUTTER

Part No. 102061

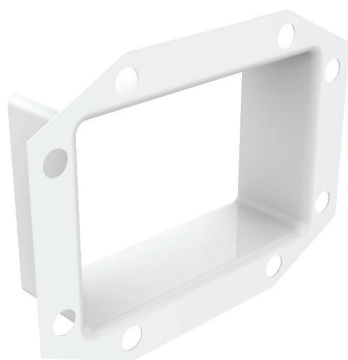
Specifications:

- Standard Gutter Outlet Affixed To Underside Of Gutter Allowing Attachment Of Downpipe Or Elbows.

[CAD Download](#) | [PDF Download](#)

\$2.49/ea.

Iso View



Detail View

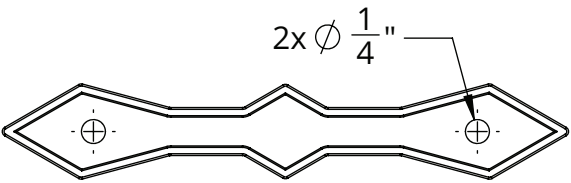


INCLUDED PARTS			
PROD. NO.	PART NO.	PART NAME	QTY
1	102061	GUTTER DOWNPIPE OUTLET	1

Application Typical Installation



Front View



2 x 3 GUTTER DOWNPIPE STRAP

Category: GUTTER

Part No. 102062

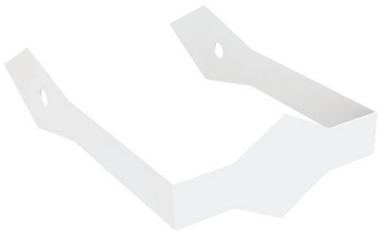
Specifications:

- Standard Aluminum Straps To Wrap Around Downpipe Attaching To Post Or Adjacent Structure.

[CAD Download](#) | [PDF Download](#)

\$2.39/ea.

Iso View



Detail View



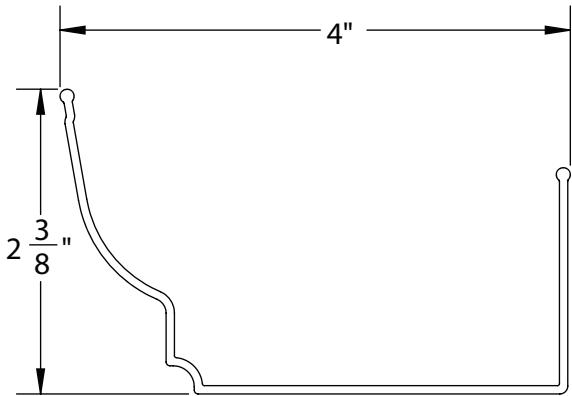
INCLUDED PARTS

PROD. NO.	PART NO.	PART NAME	QTY
1	102062	GUTTER DOWNPIPE STRAPS	1

Application Typical Installation



Front View



LOW PROFILE GUTTER SPLICE -16"

Category: SPLICE

Part No.100407

Specifications:

- Insertable Aluminum Splice To Connect Two Sections Of Gutter Where Lengths Over 24 Foot Are Required.

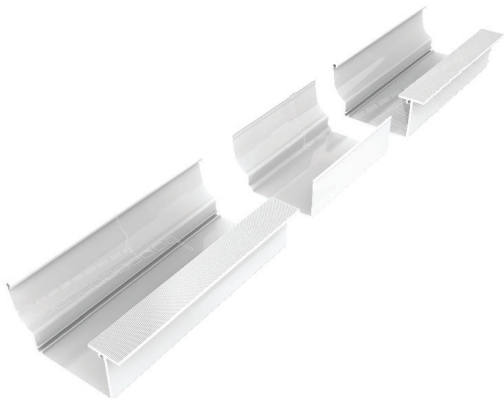
[CAD Download](#) | [PDF Download](#)

\$16.86/ea.

Iso View



Detail View



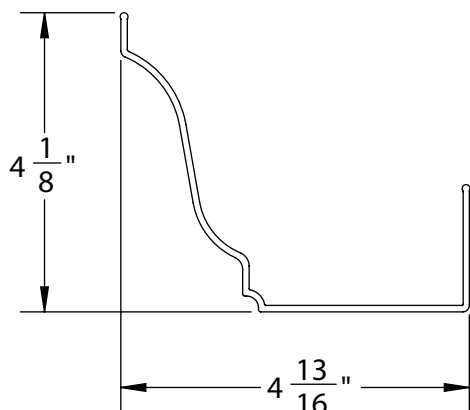
INCLUDED PARTS

PROD. NO.	PART NO.	PART NAME.	QTY
1	100407	LOW PROFILE GUTTER SPLICE	1

Application Typical Installation



Front View



COLONIAL GUTTER SPLICE - 16"

Category: SPLICE

Part No. 101141

Specifications:

- Insertable Aluminum Splice To Connect Two Sections Of Gutter Where Lengths Over 24 Foot Lengths Are Required.

[CAD Download](#) | [PDF Download](#)

\$19.18/ea.

Iso View



INCLUDED PARTS

PROD. NO.	PART NO.	PART NAME	QTY
1	101141	COLONIAL GUTTER SPLICE - 16"	1

Detail View



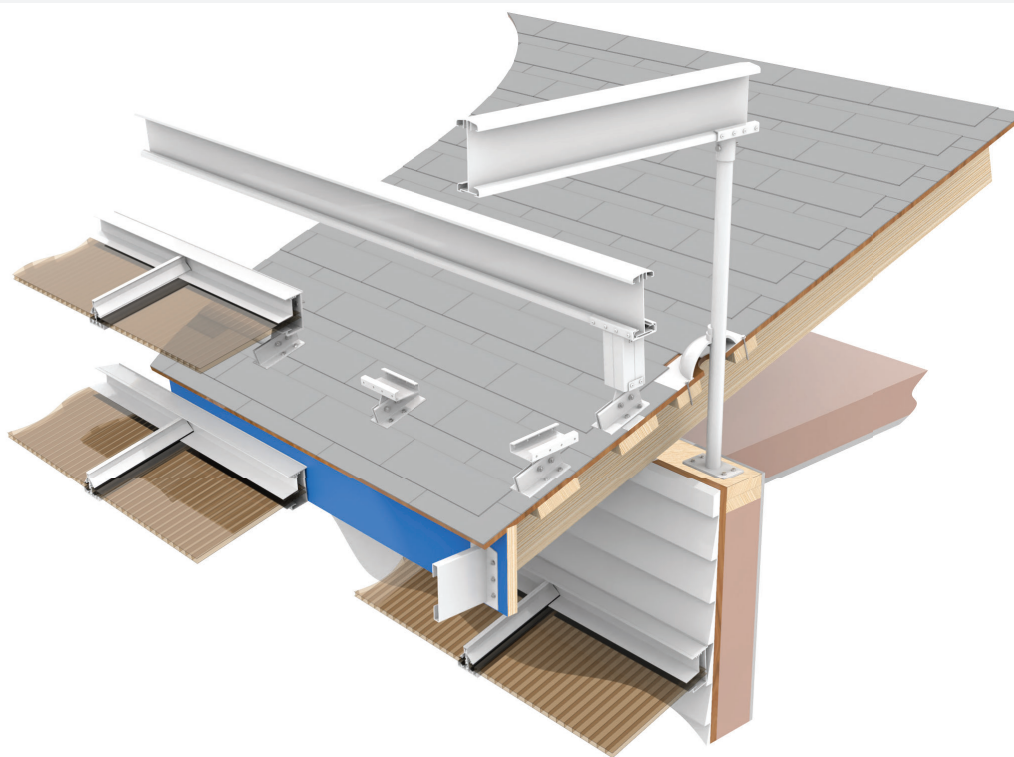
Application Typical Installation



ROOF MOUNTING SYSTEMS



MOUNTING SYSTEMS



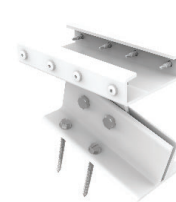
101335



101714



101728



101729



101734



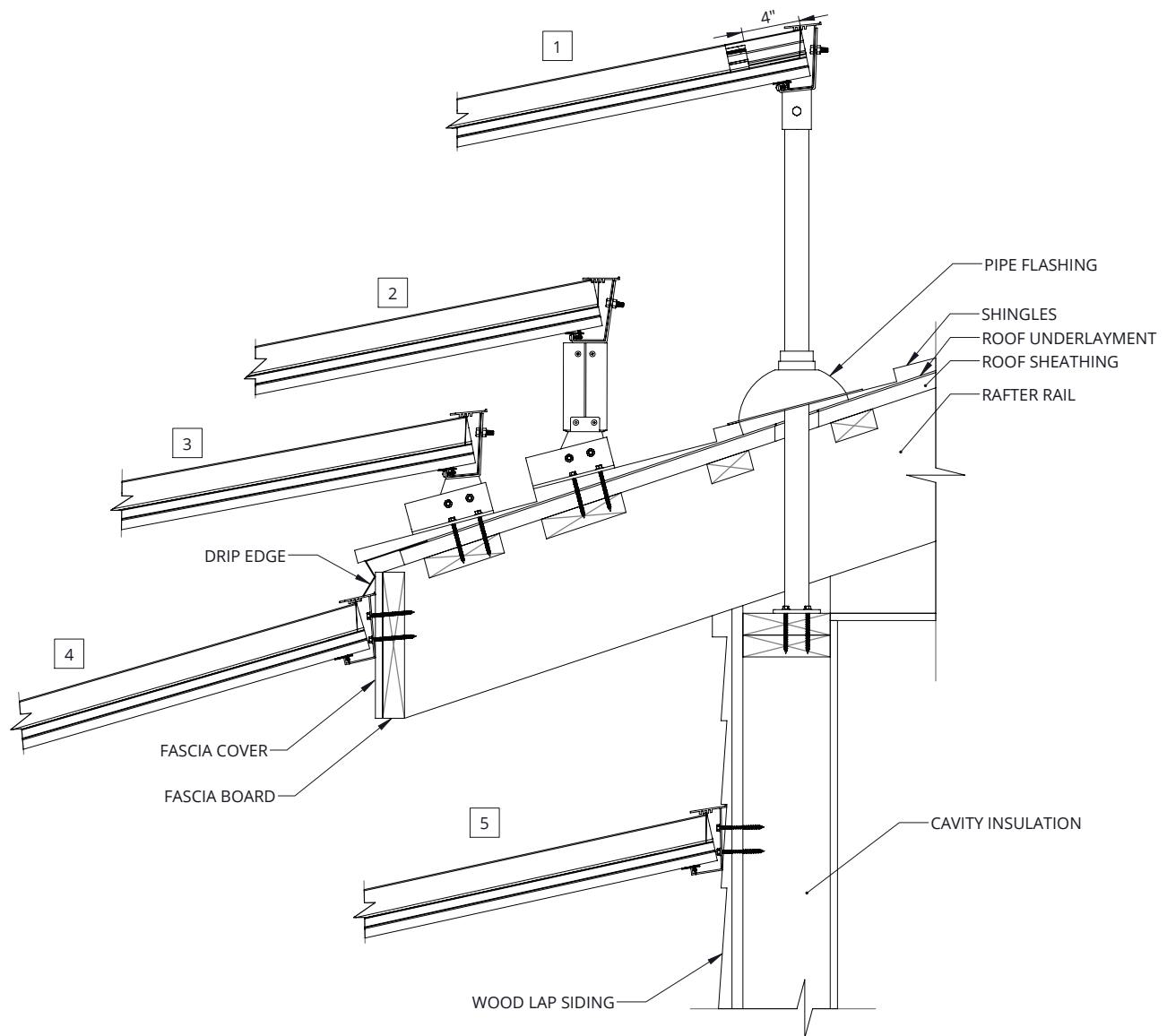
101798



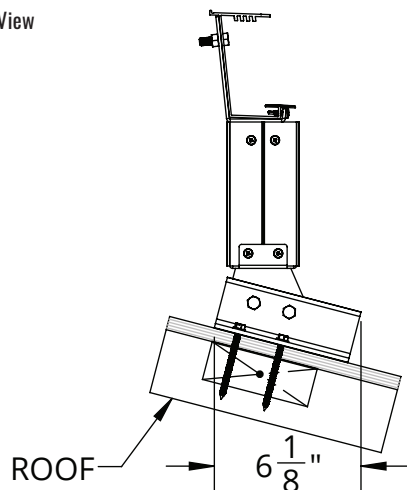
101800



101804



Front View



ROOF RISER PACKAGE - HANGER

Category: MOUNT

Part No. 101335

Specifications:

- Allows Hanging Rail To Be Elevated Above Existing Roofs To Achieve Desired Height And/Or Necessary Cover Pitch.

[CAD Download](#) | [PDF Download](#)

\$87.04/pkg.

INCLUDED PARTS

PROD. NO.	PART NO.	PART NAME	QTY
1	101709	POST HANGING RAIL CONNECTOR	1
2	100425	PATIO COVER POST	1
3	101710	ROOF MOUNT POST CONNECTOR	1
4	100423	WALL MOUNT BRACKET - 5.75'	1
5	100588	SCREW, #14 X 3, LAG	4
6	100587	BOLT, 5/16-18 X 1	6
7	100589	NUT, 5/16-18	6
8	100591	SCREW, #10 X 3/4, BUTTON, SQUARE, SELF TAP	12

RELATED ITEMS



100400

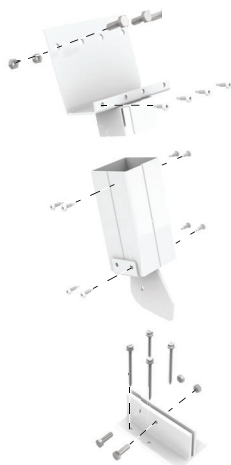


100365

Iso View



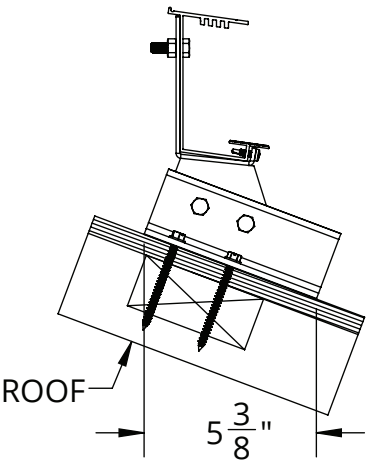
Detail View



Application Typical Installation



Front View



Iso View



Detail View



ROOF MOUNT PACKAGE - HANGER

Category: MOUNT

Part No. 101714

Specifications:

- Allows Hanging Rail To Be Mounted To Existing Roofs To Achieve Desired Height And/Or Necessary Cover Pitch.

[CAD Download](#) | [PDF Download](#)

\$49.75/pkg.

INCLUDED PARTS

PROD. NO.	PART NO.	PART NAME.	QTY
1	101713	ROOF MOUNT HANGING RAIL CONNECTOR	1
2	100423	WALL MOUNT BRACKET - 5.75"	1
3	100588	SCREW, #14 X 3, LAG	4
4	100587	BOLT, 5/16-18 X 1	6
5	100589	NUT, 5/16-18	6
6	100591	SCREW, #10 X 3/4, BUTTON, SQUARE, SELF TAP	4

RELATED ITEMS

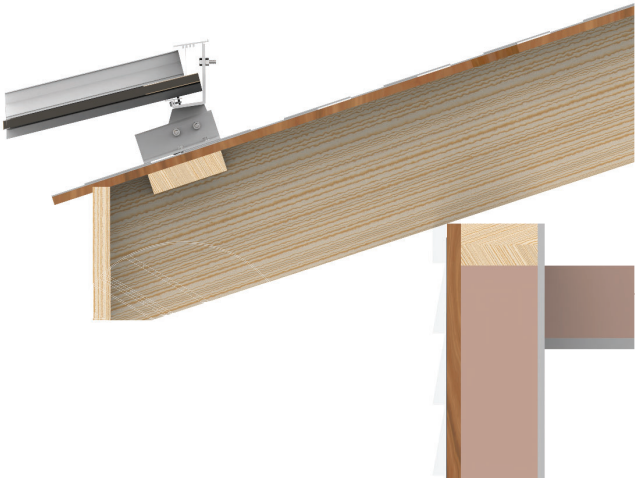


100400

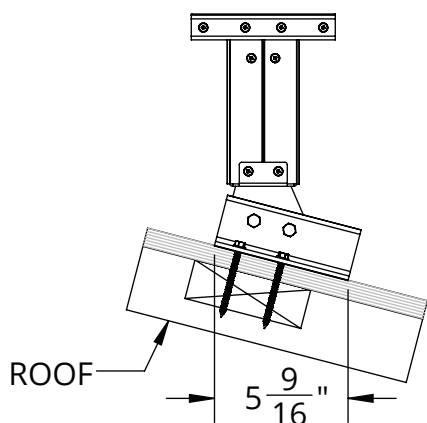


100365

Application Typical Installation



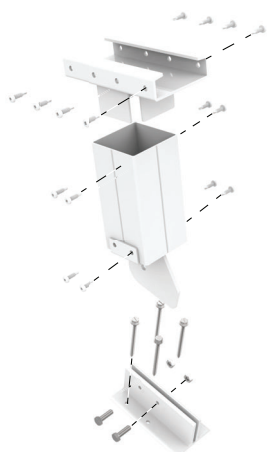
Front View



Iso View



Detail View



ROOF RISER PACKAGE - BEAM

Category: MOUNT

Part No. 101728

Specifications:

- Allows Heavy Duty Beam To Be Elevated Above Existing Roofs To Achieve Desired Height And/Or Necessary Cover Pitch.

[CAD Download](#) | [PDF Download](#)

\$87.85/pkg.

INCLUDED PARTS

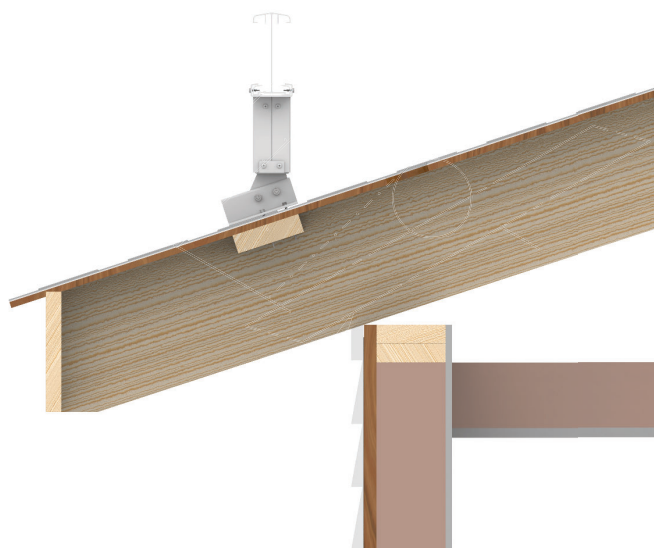
PROD. NO.	PART NO.	PART NAME	QTY
1	101732	POST BEAM CONNECTOR	1
2	100425	PATIO COVER POST	1
3	101710	ROOF MOUNT POST CONNECTOR	1
4	100423	WALL MOUNT BRACKET - 5.75"	1
5	100588	SCREW, #14 X 3, LAG	4
6	100587	BOLT, 5/16-18 X 1	2
7	100591	SCREW, #10 X 3/4, BUTTON, SQUARE, SELF TAP	16
8	100589	NUT, 5/16-18	2

RELATED ITEMS

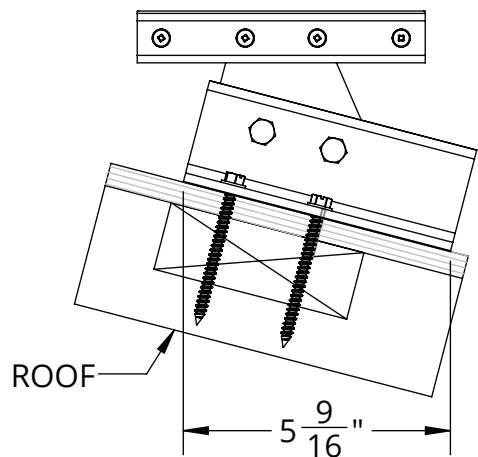


100365

Application Typical Installation



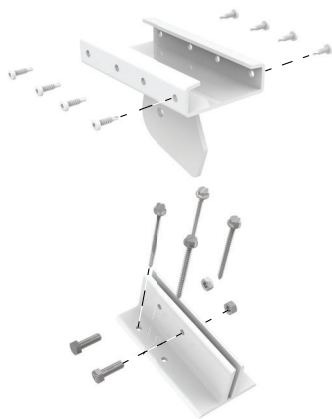
Front View



Iso View



Detail View



ROOF MOUNT PACKAGE - BEAM (FORWARD)

Category: MOUNT

Part No. 101729

Specifications:

- Allows Heavy Duty Beam To Be Elevated Above Existing Roofs To Achieve Desired Height And/Or Necessary Cover Pitch.

[CAD Download](#) | [PDF Download](#)

\$48.18/pkg.

INCLUDED PARTS			
PROD. NO.	PART NO.	PART NAME	QTY
1	101731	ROOF MOUNT - BEAM (FORWARD)	1
2	100423	WALL MOUNT BRACKET - 5.75"	1
3	100588	SCREW, #14 X 3, LAG	4
4	100587	BOLT, 5/16-18 X 1	2
5	100591	SCREW, #10 X 3/4, BUTTON, SQUARE, SELF TAP	8
6	100589	NUT, 5/16-18	2

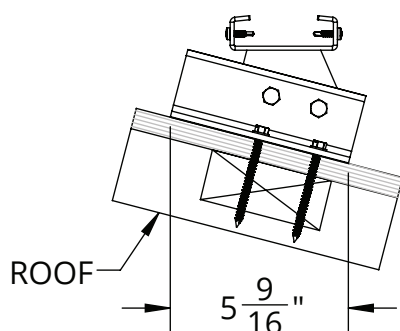
RELATED ITEMS



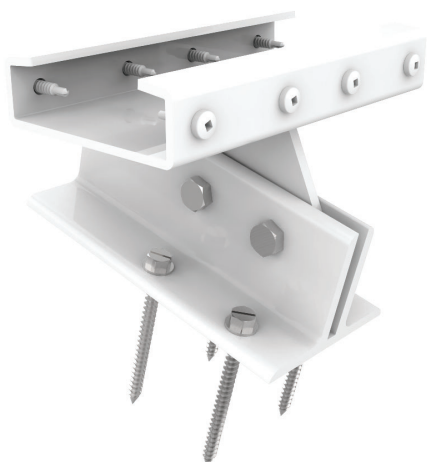
Application Typical Installation



Front View



Iso View



Detail View



ROOF MOUNT PACKAGE - BEAM (ACROSS)

Category: MOUNT

Part No. 101734

Specifications:

- Allows Heavy Duty Beam To Be Elevated Above Existing Roofs To Achieve Desired Height And/Or Necessary Cover Pitch.

[CAD Download](#) | [PDF Download](#)

\$49.63/pkg.

INCLUDED PARTS

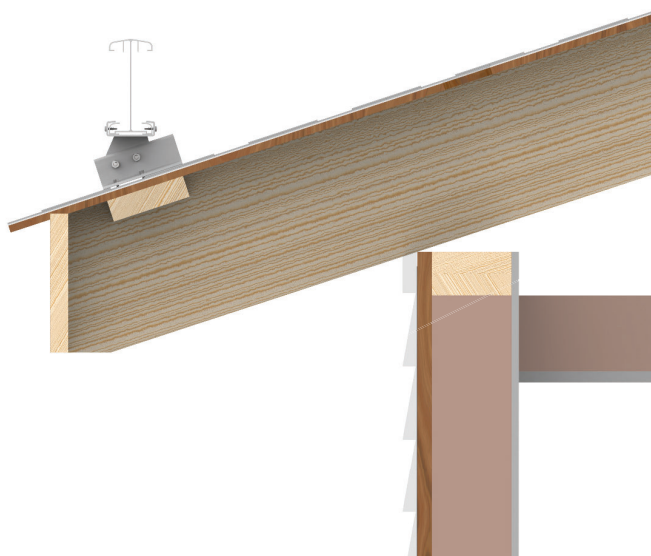
PROD. NO.	PART NO.	PART NAME	QTY
1	101733	ROOF MOUNT - BEAM (ACROSS)	1
2	100423	WALL MOUNT BRACKET - 5.75"	1
3	100588	SCREW, #14 X 3, LAG	4
4	100587	BOLT, 5/16-18 X 1	2
5	100589	NUT, 5/16-18	2
6	100591	SCREW, #10 X 3/4, BUTTON, SQUARE, SELF TAP	8

RELATED ITEMS

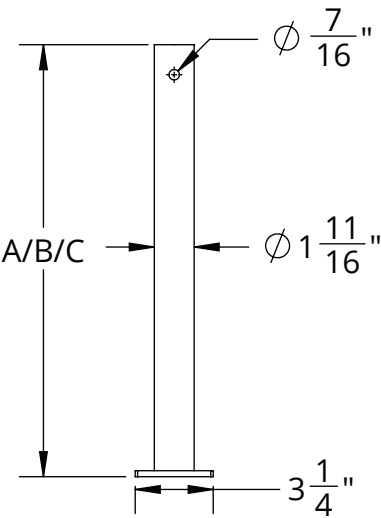


100365

Application Typical Installation



Front View



Iso View



Detail View



SKYLIFT RISER TUBE ASSEMBLY

Category: MOUNT
Part No. 101798, 101930 & 101931
Specifications:

[CAD Download](#) | [PDF Download](#)

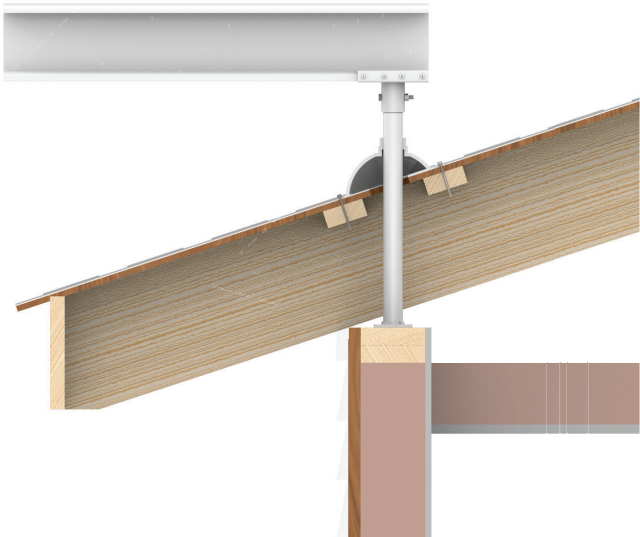
- A.) \$43.57/ea.
- B.) \$56.02/ea.
- C.) \$47.72/ea.

INCLUDED PARTS			
PROD. NO.	PART NO.	PART NAME	QTY
A	101798	SKYLIFT RISER TUBE ASSEMBLY - 18"	1
B	101930	SKYLIFT RISER TUBE ASSEMBLY - 36"	1
C	101931	SKYLIFT RISER TUBE ASSEMBLY - 24"	1

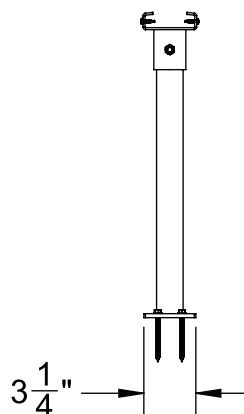
RELATED ITEMS



Application Typical Installation



Front View



SKYLIFT SADDLE BEAM

Category: MOUNT

Part No. 101800

Specifications:

- Attach To Roof Riser To Mount Heavy Duty Beam. Rotate To Allow Beam To Run Along Roof Or To Project From Roof.

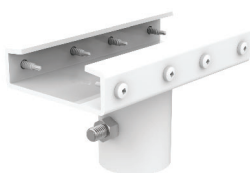
[CAD Download](#) | [PDF Download](#)

\$34.17/pkg.

INCLUDED PARTS

PROD. NO.	PART NO.	PART NAME	QTY
1	101799	SKYLIFT BEAM BRACKET	1
2	101802	NUT, 3/8-16 S/S HevHx	1
3	101801	BOLT, 3/8-16 x 2 3/4 S/S HCS	1
4	100588	SCREW, #14 X 3, LAG	4
5	100591	SCREW, #10 X 3/4, BUTTON, SQUARE, SELF TAP	8

Iso View

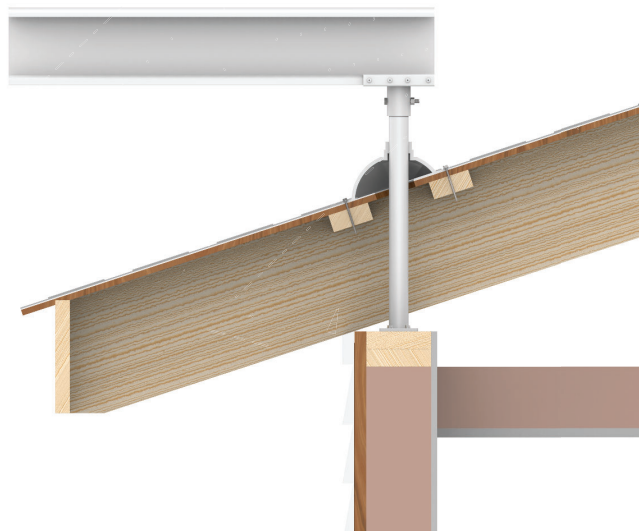


RELATED ITEMS



100365

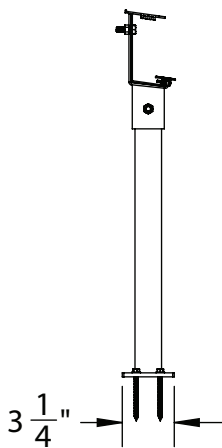
Application Typical Installation



Detail View



Front View



Iso View



Detail View



SKYLIFT SADDLE HANGING RAIL

Category: MOUNT

Part No. 101804

Specifications:

- Attach To Roof Riser To Mount Standard Hanging Rail..

[CAD Download](#) | [PDF Download](#)

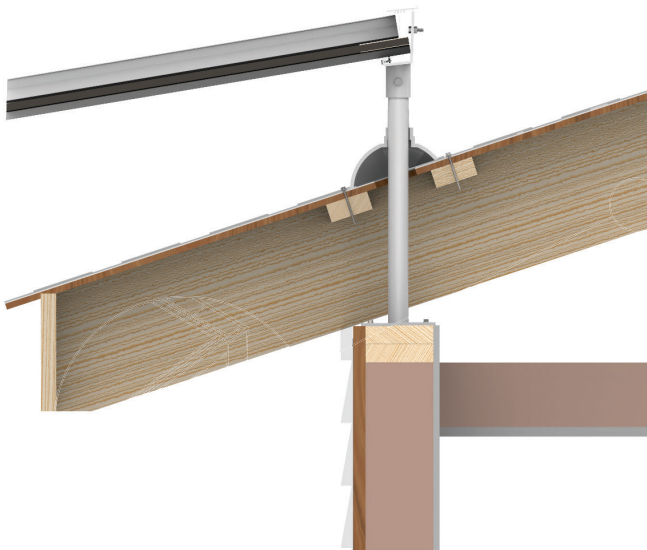
\$33.61/ft.

INCLUDED PARTS			
PROD. NO.	PART NO.	PART NAME	QTY
1	101803	SKYLIFT HANGER BRACKET	1
3	101801	BOLT, 3/8-16 x 2 3/4 S/S HCS	1
4	101802	NUT, 3/8-16 S/S HevHx	1
5	100588	SCREW, #14 X 3, LAG	4
6	100591	SCREW, #10 X 3/4, BUTTON, SQUARE, SELF TAP	4
7	100587	BOLT, 5/16-18 X 1	4
8	100589	NUT, 5/16-18	4

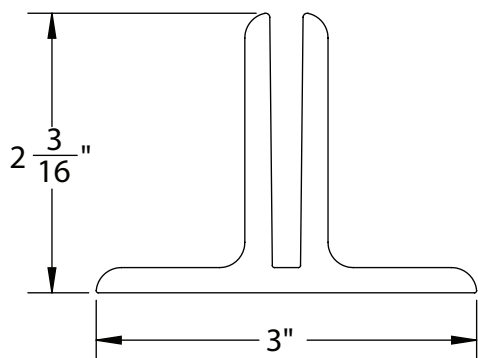
RELATED ITEMS



Application Typical Installation



Front View



WALL MOUNT BRACKET

Category: MOUNT

Part No. 100419, 100421& 100423

Specifications:

- Heavy Duty Bracket Used To Mount Beams To Structure Walls, Structure Roofs And To Connect Beams To Each Other.

[CAD Download](#) | [PDF Download](#)

A.) \$12.45/ft.

B.) \$13.49/ft.

C.) \$14.52/ft.

INCLUDED PARTS

PROD. NO.	PART NO.	PART NAME	QTY
A	100419	WALL MOUNT BRACKET - 3 1/2"	1
B	100421	WALL MOUNT BRACKET - 4 3/4"	1
C	100423	WALL MOUNT BRACKET - 5 3/4"	1

Iso View



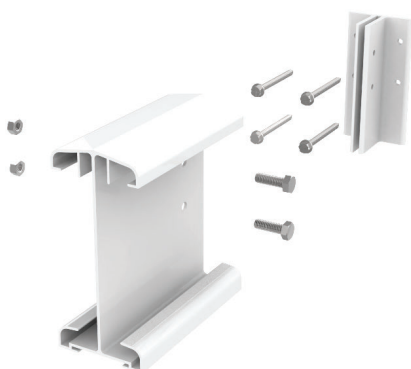
RELATED ITEMS



100340

100365

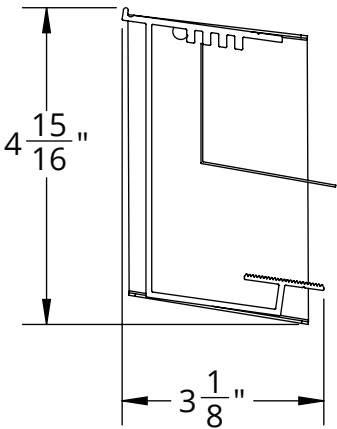
Detail View



Application Typical Installation



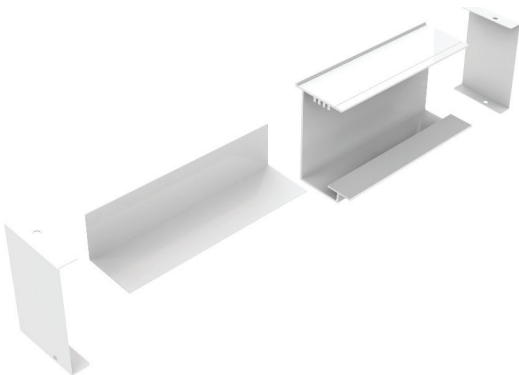
Front View



Iso View



Detail View



HANGING RAIL WITH END CAPS

Category: HANGING RAIL

Part No. 100400

Specifications:

- Extruded Aluminum Channel Attached Along Structure Or Fascia Or Above Roofline As High Starting Point For Shed Style Covers.

[CAD Download](#) | [PDF Download](#)

\$9.79/ft.

INCLUDED PARTS

PROD. NO.	PART NO.	PART NAME	QTY
1	100401	HANGING RAIL	1
2	100541	HANGING RAIL END CAP, R	1
3	100539	HANGING RAIL END CAP, L	1
4	100575	Hanger Flashing - 1 7/8" x 2 1/8" x 102"	1
5	100591	SCREW, #10 X 3/4, BUTTON, SQUARE, SELF TAP	4

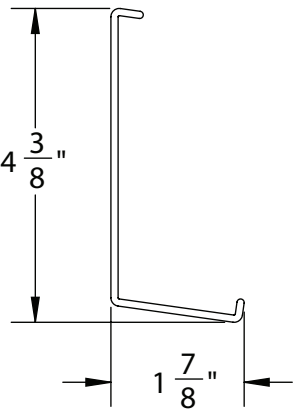
RELATED ITEMS



Application Typical Installation



Front View



HANGING RAIL SPLICE -16"

Category: SPLICE

Part No. 100411

Specifications:

- Insertable Aluminum Splice To Connect Two Sections Of Hanging Rail Where Over 24 Foot Lengths Are Required.

[CAD Download](#) | [PDF Download](#)

\$9.41/ea.

Iso View

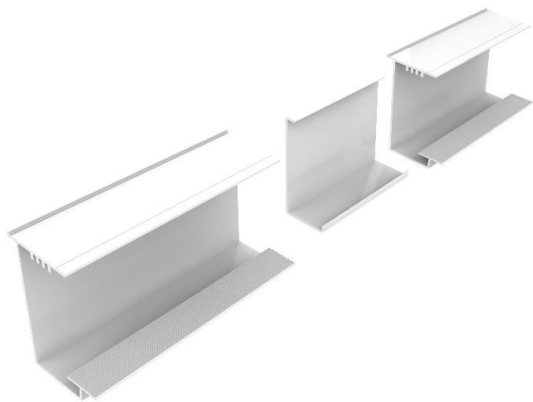


RELATED ITEMS

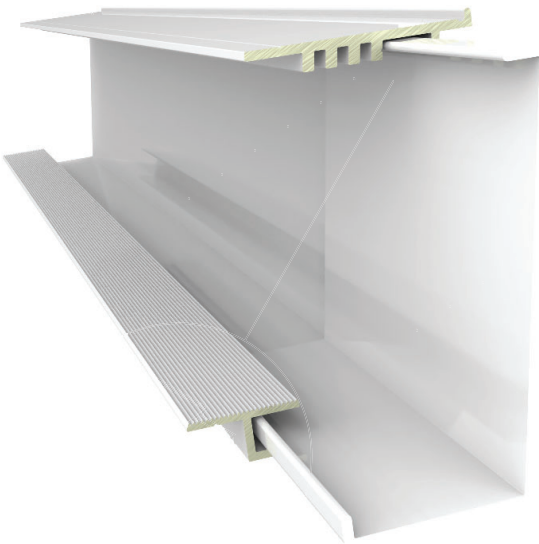


100400

Detail View



Application Typical Installation

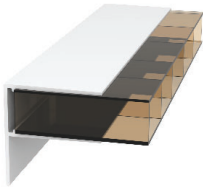


A photograph of a modern house with dark grey horizontal siding and white window frames. A large, black-framed glass-enclosed patio structure is attached to the house, extending over a wooden deck. The patio has a gabled roof and is supported by a central black pole. Inside the patio, there is a dark-colored outdoor sofa with patterned cushions. The house is surrounded by lush greenery, including tall evergreen trees in the background and various shrubs and plants in the foreground. The scene is captured in bright daylight, with strong shadows and highlights.

RETROFIT

LIVE BEYOND WALLS
We just want to relax outside

RETROFIT



100442



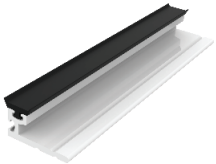
100579



103338



101741



100604



100415

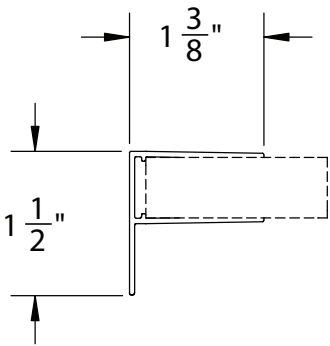


100464



103363

Front View



LARGE F-SECTION

Category: FLASHING

Part No. 100442

Specifications:

- Larger Aluminum F-Section Used To Hold Acrylic Panels In Place When Used To Glaze Small Vertical Areas Such As Gable Ends (Rakes).

[CAD Download](#) | [PDF Download](#)

\$1.85/ft.

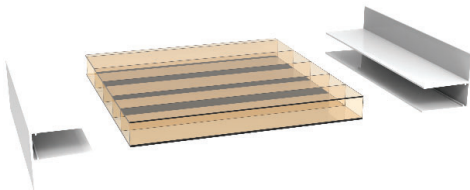
Iso View



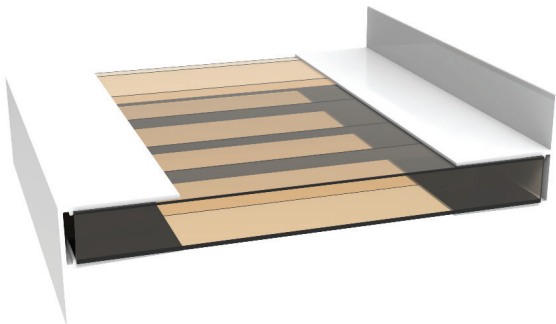
INCLUDED PARTS

PROD. NO.	PART NO.	PART NAME	QTY
1	100442	LARGE F-SECTION	1

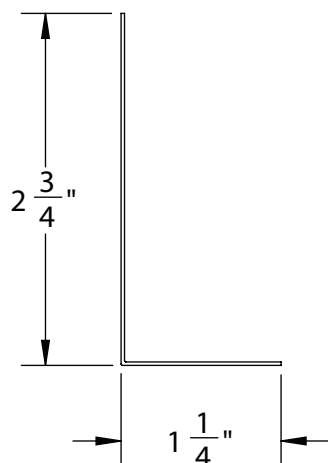
Detail View



Application Typical Installation



Front View



WALL FLASHING - 2 3/4" X 1 1/4" X 102"

Category: ACCESSORY

Part No.100579

Specifications:

- Formed Aluminum Flashing Used When Side Of Covers Meet With Structure Walls.

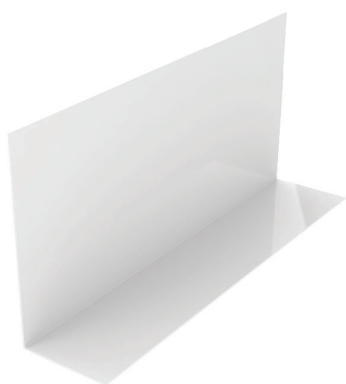
[CAD Download](#) | [PDF Download](#)

\$12.45/ea.

INCLUDED PARTS

PROD. NO.	PART NO.	PART NAME	QTY
1	100579	Wall Flashing - 2 3/4" x 1 1/4" x 102"	1

Iso View

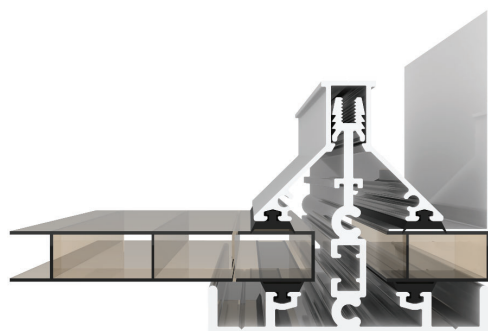


RELATED ITEMS

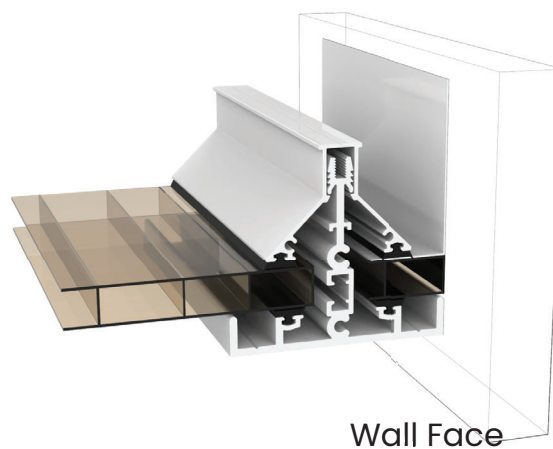


100433

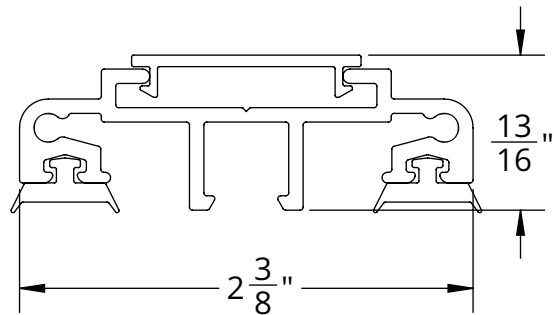
Detail View



Application Typical Installation



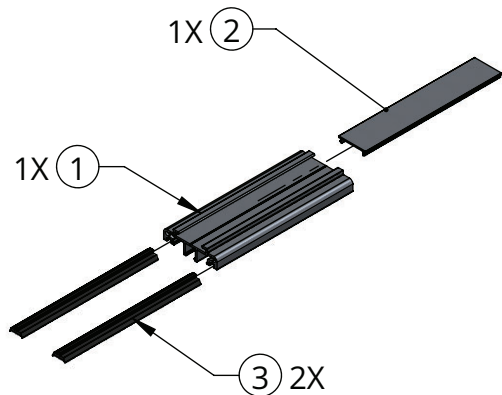
Front View



Iso View



Detail View



CLAMPING BAR UPPER ASSEMBLY

Category: ACCESSORY

Part No.103338

Specifications:

- Glazing System Used To Various Thicknesses Of Glazing Material To Existing Metal Rafters. Includes: Clamping Bar, PVC Screw Cover & Rubber Gasketing.

[CAD Download](#) | [PDF Download](#)

\$5.00/ea.

INCLUDED PARTS

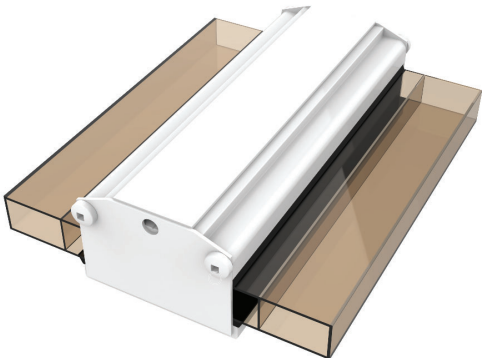
PROD. NO.	PART NO.	PART NAME	QTY
1	100325	CLAMPING BAR	1
2	100583	PVC SCREW COVER	1
3	100290	RUBBER GASKET	2

RELATED ITEMS

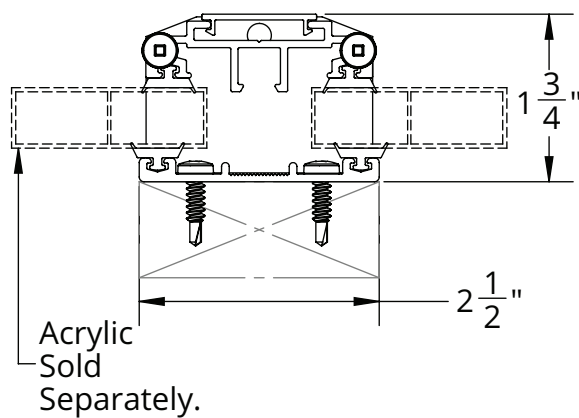


101741

Application Typical Installation



Front View



CLAMPING SYSTEM COMPLETE ASSEMBLY

Category: ACCESSORY

Part No. 101741

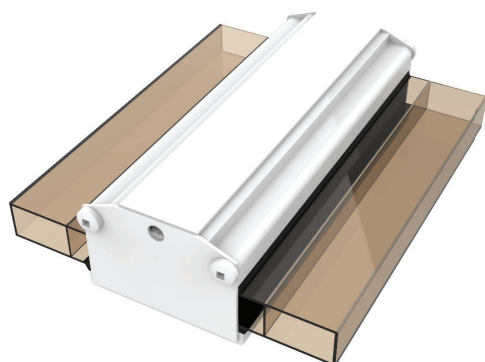
Specifications:

- Glazing System Used To Attach Various Thicknesses Of Glazing Material To Existing Roof Structure, Pergola Or Similar. Includes: Clamping Bar, PVC Screw Cover, Base Metal, Rubber Gasketing & End Cap.

[CAD Download](#) | [PDF Download](#)

\$8.51/ft.

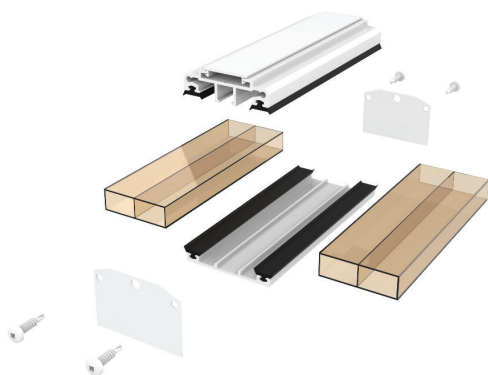
Iso View



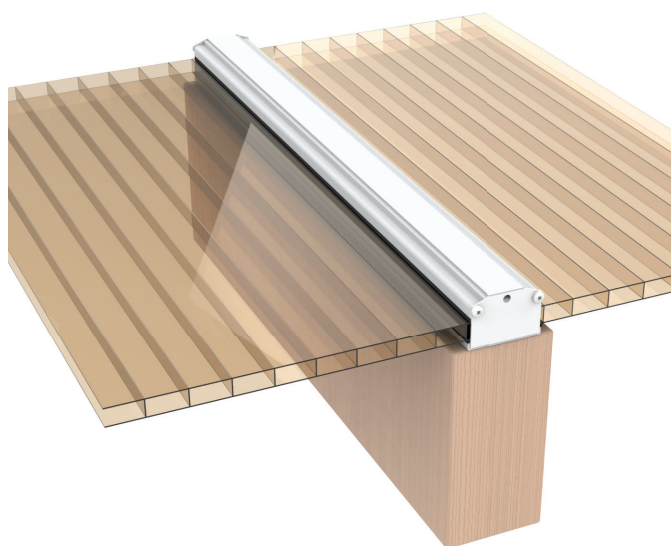
INCLUDED PARTS

PROD. NO.	PART NO.	PART NAME	QTY
1	100325	CLAMPING BAR	1
2	100583	PVC SCREW COVER	1
3	100327	CLAMPING BAR BASE METAL	1
4	100290	RUBBER GASKET	4
5	100535	CLAMPING BAR END CAP	2
6	100591	SCREW, #10 X 3/4, BUTTON, SQUARE, SELF TAP	4

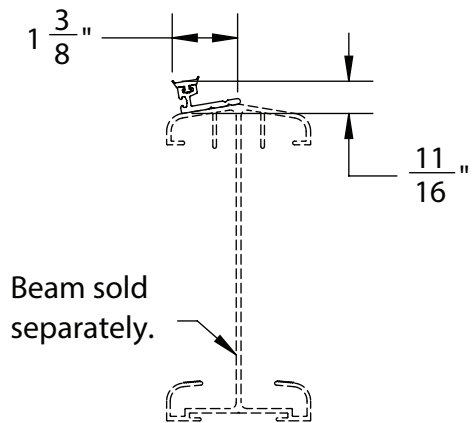
Detail View



Application Typical Installation



Front View



WEATHER BLOCK WITH GASKET

Category: ACCESSORY

Part No.100604

Specifications:

- Gasketed Aluminum Section Used On Top Of Or On The Face Of Beams Between T-Bar Rafters. Seals The Opening Between The Glazing The Beam To Block Weather And/Or Insects.

[CAD Download](#) | [PDF Download](#)

\$2.72/ft.

Iso View



Detail View



INCLUDED PARTS

PROD. NO.	PART NO.	PART NAME	QTY
1	100431	WEATHER BLOCK	1
2	100290	RUBBER GASKET	1

RELATED ITEMS

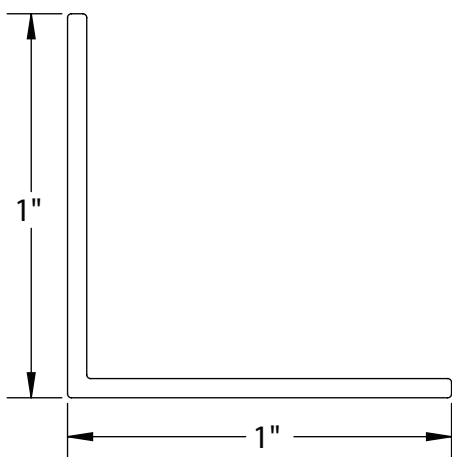


100365

Application Typical Installation



Front View



1 x 1 CORNER

Category: ACCESSORY

Part No. 100415

Specifications:

- Extruded Aluminum Corner Channel Used As Trim Where Necessary.

[CAD Download](#) | [PDF Download](#)

\$1.82/ea.

Iso View



Detail View



INCLUDED PARTS

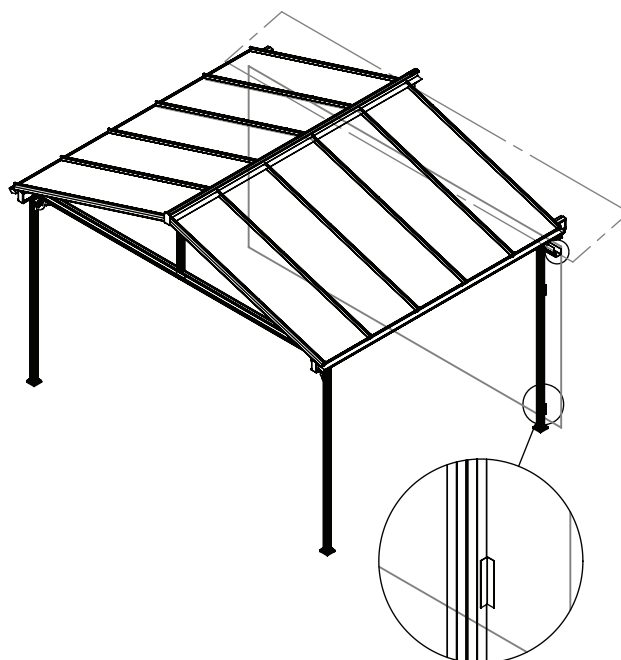
PROD. NO.	PART NO.	PART NAME	QTY
1	100415	1 x 1 CORNER	1

RELATED ITEMS

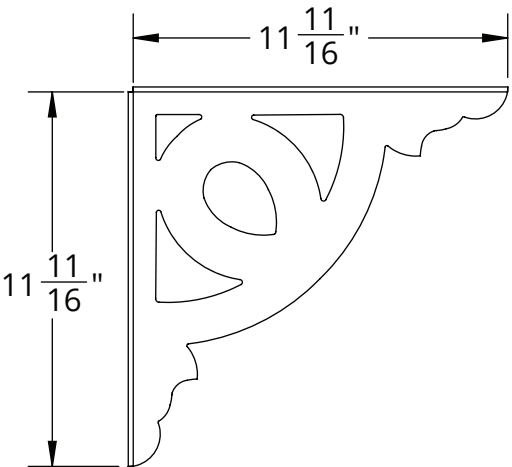


100425

Application Typical Installation



Front View



Iso View



Detail View



BEAM CORNER GUSSET

Category: ACCESSORY

Part No. 100464

Specifications:

- Used As A Decorative Element Or To Assist As A Brace Against Lateral Movement In Free-Standing Covers Or Otherwise.

[CAD Download](#) | [PDF Download](#)

\$30.29/ea.

INCLUDED PARTS

PROD. NO.	PART NO.	PART NAME.	QTY
1	100464	BEAM CORNER GUSSET	1

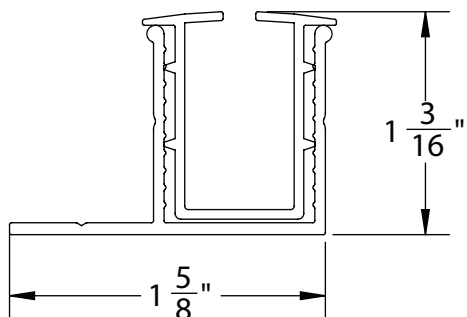
RELATED ITEMS



Application Typical Installation



Front View



Iso View



Detail View



GLASS RAIL WITH VINYL INSERT

Category: ACCESSORY

Part No. 103363

Specifications:

- Aluminum Section With Insert Attaches To Post & Beams For Vertical Glass Glazing In Wind Walls, Etc.

[CAD Download](#) | [PDF Download](#)

\$3.17/ft.

INCLUDED PARTS

PROD. NO.	PART NO.	PART NAME	QTY
1	103363	GLASS RAIL	1
2	100292	GLASS VINYL INSERT	1

RELATED ITEMS

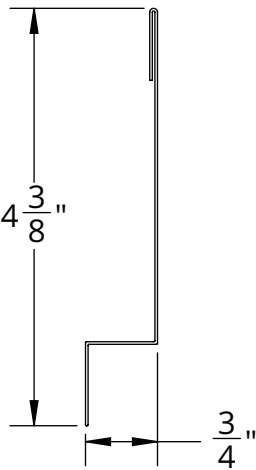


100425

Application Typical Installation



Front View



GUTTER FLASHING - 3 1/2" X 3/4" X 7/8" X 102"

Category: ACCESSORY

Part No. 100581

Specifications:

- Formed Aluminum Flashing Used When Mounting Covers Beneath Existing Conventional Gutters.

[CAD Download](#) | [PDF Download](#)

\$18.67/ea.

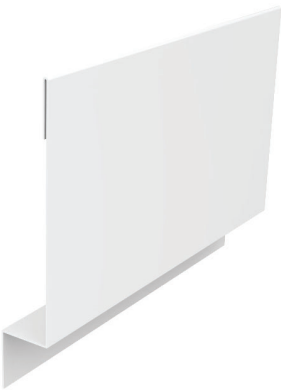
Iso View



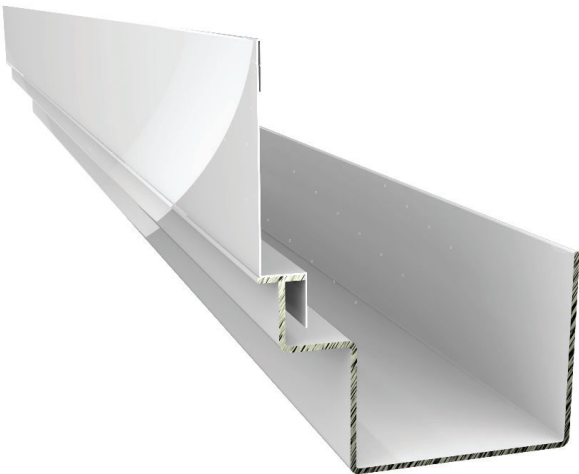
INCLUDED PARTS

PROD. NO.	PART NO.	PART NAME	QTY
1	100581	GUTTER FLASHING - 3 1/2" X 3/4" X 7/8" X 102"	1

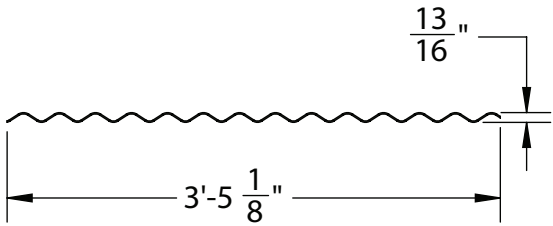
Detail View



Application Typical Installation



Front View



ACRYLITE® WAVE

Category: ACCESSORY

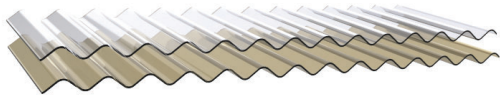
Part No. VARIES

Specifications:

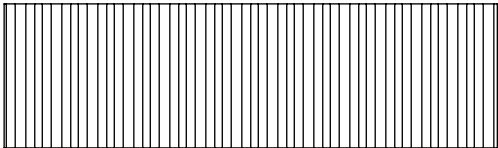
[CAD Download](#) | [PDF Download](#)

\$197.11/ft.

Iso View



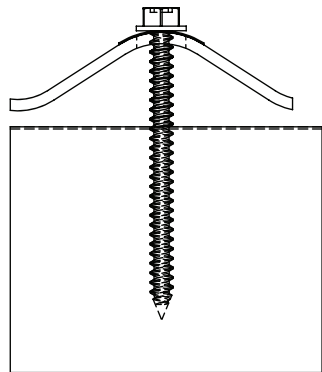
Detail View



INCLUDED PARTS

PROD. NO.	PART NO.	PART NAME	QTY
1	101743	ACRYLITE® WAVE - SMOOTH CLEAR -12	1
2	101745	ACRYLITE® WAVE - SMOOTH WHITE -12	1
3	101747	ACRYLITE® WAVE - SMOOTH SUNGLASS GREY -12	1
4	101749	ACRYLITE® WAVE - GRAPHITE GREY -12	1
5	101755	ACRYLITE® WAVE - PRISMATIC CLEAR -12	1
6	101757	ACRYLITE® WAVE - PRISMATIC BRONZE -12	1
7	101759	ACRYLITE® WAVE - HEATSTOP COOL BLUE -12	1
8	101744	ACRYLITE WAVE SMOOTH CLEAR -16	1
9	101746	ACRYLITE WAVE SMOOTH WHITE -16	1
10	101748	ACRYLITE WAVE SMOOTH SUNGLASS GREY 16	1
11	101750	ACRYLITE WAVE GRAPHITE GREY 16	1
12	101756	ACRYLITE WAVE PRISMATIC CLEAR 16	1
13	101758	ACRYLITE WAVE PRISMATIC BRONZE 16	1
14	101760	ACRYLITE WAVE HEATSTOP COOL BLUE 16	1

Front View



WAVE PROFILE CALOTTES

Category: ACCESSORY

Part No.101761

Specifications:

[CAD Download](#) | [PDF Download](#)

\$1.76/ea.

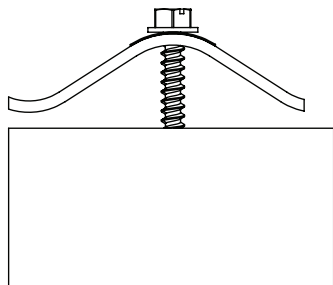
Iso View



INCLUDED PARTS

PROD. NO.	PART NO.	PART NAME	PRICE	QTY
1	101761	Wave Profile Calottes (Mill)	\$1.76/ea	1
2	101762	WAVE PROFILE CALOTTES (BROWN)	\$1.76/ea	1
3	101763	WAVE PROFILE FOAM CLOSURE	\$3.20/ea	1
4	101764	WAVE RIDGE FLASHING (2 PIECE)	\$62.24/ea	1

Detail View



Application Typical Installation



5916 195th St., NE
Arlington, WA 98223
www.americanpatiocovers.com
Email: tom@americanpatiocovers.com
Phone: 360-530-2508

Copyright © 2019 American Patio Concepts